



LELIEVRE
PARIS

Collection
Îles du vent

Press release - January 2026



About

A warm breeze greets the new Îles du Vent collection, Lelièvre Paris' first in/outdoor fabric line. Inspired by the raw, sensual beauty of the Caribbean, it transports us to sunlit shores, between vibrant jungles and refined elegance.

Celebrating island poetry, the collection evokes swaying palms, the play of light and shadow, and textures warmed by the sun. Entirely designed by Lelièvre Studio, Îles du Vent combines decorative creativity with outdoor performance for a complete sensory experience, blending tropical elegance with authenticity.

CARAÏBES

5061



01
Doré



02
Vert

TECHNICAL INFORMATION

Composition	Polypropylene 100%
Width	139 cm/54.72"
Repeats	V: 50 cm/19.68" H: 70 cm/27.55"
Weight	869 g/ml
Martindale	30 000
Care	
Use	
Certification	General use upholstery Without treatment: FR - NFPA 260 FR - CAL TB 117

Behind its apparent simplicity, SABA hides a subtle play of tricolored grains. This textured plain weave offers a perfect balance between subtlety and sophistication.



SABA

5060



01
Naturel



02
Havane



03
Tomette



04
Moutarde



05
Kaki



06
Agave



07
Encre

TECHNICAL INFORMATION

Composition Polypropylene 100%

Width 135 cm/53.14"

Weight 690 g/ml

Martindale 50 000

Care

Use

Siège intensif/Heavy use upholstery

Certification Without treatment:
FR - NFPA 701, FR - NFPA 260, FR - CAL TB 117

With treatment:
FR - UK BS5852 Cigar. & Match Test

Behind its apparent simplicity, SABA hides a subtle play of tricolored grains. This textured plain weave offers a perfect balance between subtlety and sophistication.



ANTIGUA

5056



TECHNICAL INFORMATION

Composition	Polypropylène 100%
Width	133 cm/52.36"
Repeats	V: 37 cm/14.57" H: 1 cm/0.39"
Weight	1 154 g/ml
Martindale	40 000
Care	
Use	

Siège intensif/Heavy use upholstery

Certification

Without treatment:
FR - EN1021 1&2 avec mousse HR/with a HR foam
FR - NFPA 701, FR - NFPA 260, FR - CAL TB 117

With treatment:
FR - UK BS5852 Cigar. & Match Test
IMO Part 8

Graphic and bold, ANTIGUA stands out with its embossed texture and geometric patterns inspired by Caribbean craftsmanship. Its thick thread traces bold, sculpted lines.

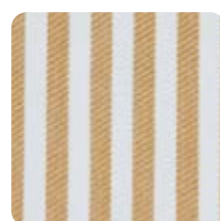


ANTILLA

5054



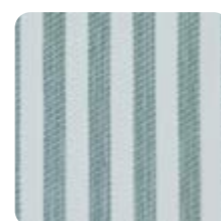
01
Naturel



02
Ocre



03
Olive



04
Azur



05
Encre



06
Noir



07
Tomette

TECHNICAL INFORMATION

Composition Polyolefine FR 100%

Width 138 cm/54.33"

Repeats H: 2cm/0.79"

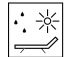
Weight 590 g/ml

Martindale 40 000

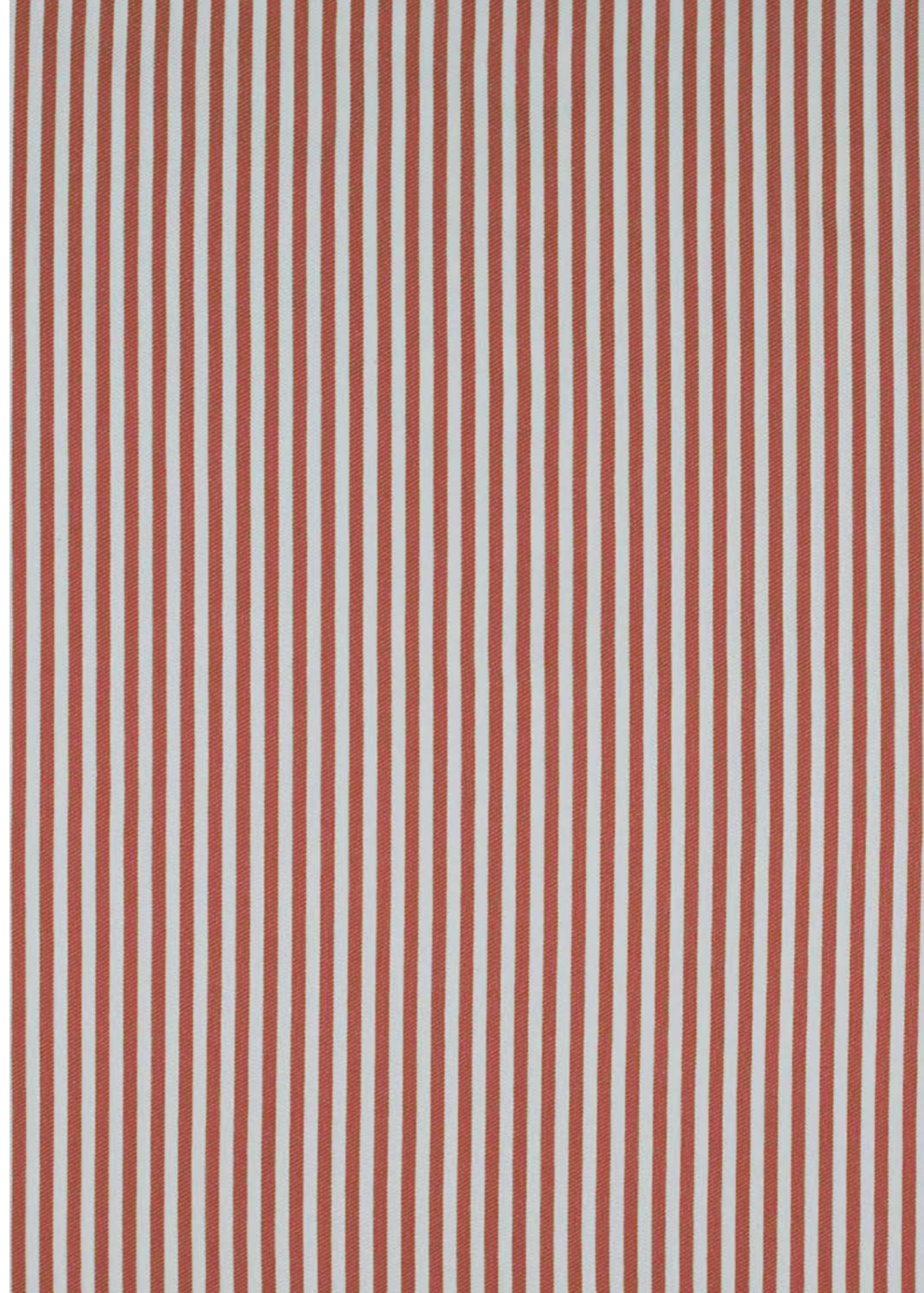
Care 

Use 

Siège intensif / Heavy use upholstery

Certification  Without treatment:
FR - EN1021 1&2 avec mousse CMHR/
with a CMHR foam, FR - CAL TB 117, FR - NFPA 260
With treatment :
FR - UK BS5852 Cigar. Test

ANTILLA features a fine classic stripe on a light background, enhanced by a subtle twill effect. The colours are gently softened by the weave, creating a look that is both vibrant and refined.

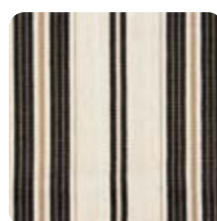


DOMINICA

5062



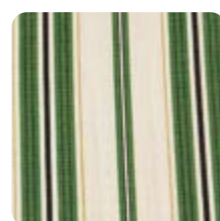
01
Muscade



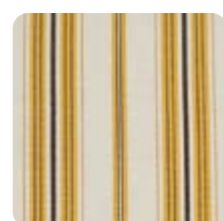
02
Écru noir



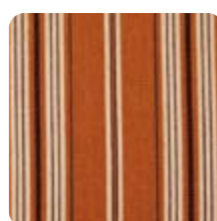
03
Paille



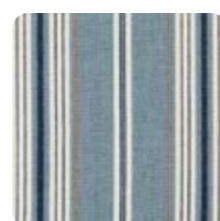
04
Prairie



05
Soleil



06
Tomette



07
Océan



08
Marine

TECHNICAL INFORMATION

Composition PAN 100%

Width 147 cm/57.87"

Repeats H: 17 cm/6.69"

Weight 1 490 g/ml

Martindale 20 000

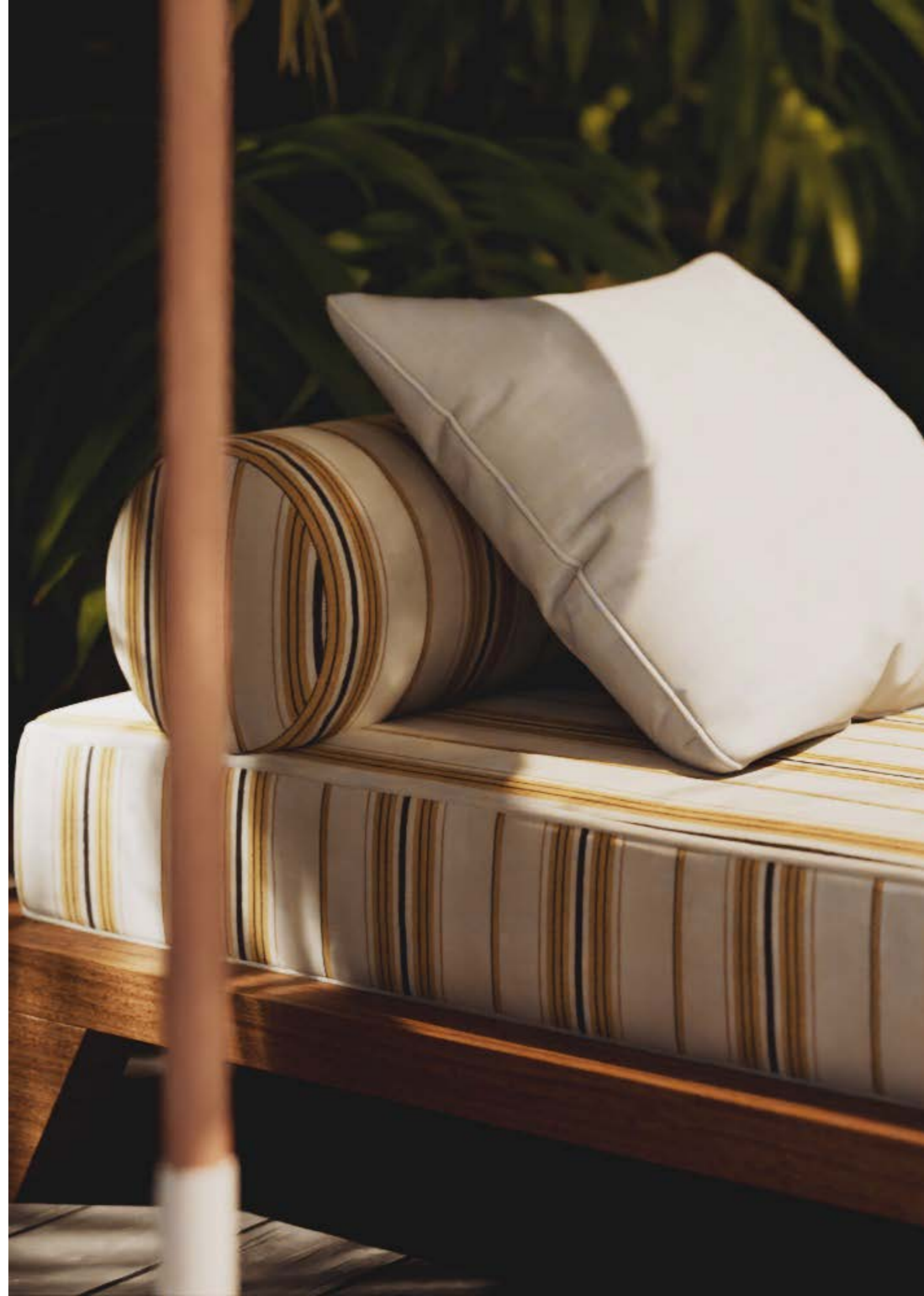
Care

Use

Siège léger/Light use upholstery

Certification Without treatment:
FR - NFPA 260
FR - CAL TB 117

Tricolor and rhythmic, DOMINICA reinvents vertical stripes with a linen effect, offering a natural look and soft drape. Its bright colors recall pastel Caribbean facades and sails floating in the harbor.



TOBAGO

5053



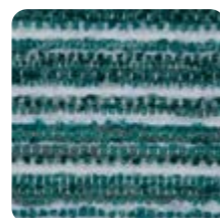
01 Naturel



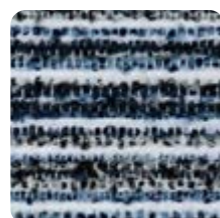
02 Tomette



03 Orage



04 Émeraude



05 Encre



06 Fusain

TECHNICAL INFORMATION

Composition Solution dyed acrylic 100%

Width 141cm/55.51"

Raccord/ Repeat V: 22cm/9.00"

Weight 840 g/ml

Martindale 20 000

Care

Use
Siège modéré / Light use upholstery

Certification Without treatment:
FR - NFPA 260, FR - CAL TB 117
With treatment:
IMO Part 8

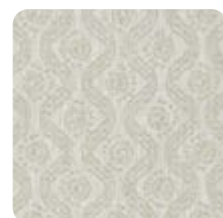


TOBAGO is a textured, relief fabric distinguished by bold, contrasting stripes. Its vivid colours bring rhythm and personality to any indoor or outdoor space.



SOMBRERO

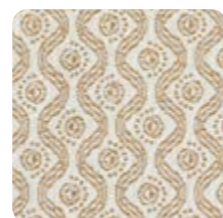
5057



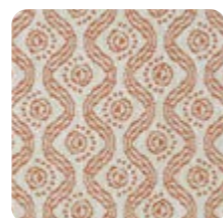
01 Naturel



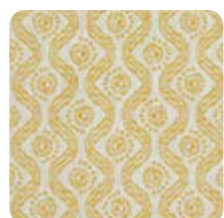
02 Poivre



03 Bronze



04 Tomette



05 Soleil



06 Kaki



07 Azur

TECHNICAL INFORMATION

Composition Polypropylene 100%

Width 134 cm/52.75"

Repeats V: 12 cm/4.72"
H: 7 cm/2.76"

Weight 637 g/ml

Martindale 40 000

Care

Use

Siège intensif/Heavy use upholstery

Certification Without treatment:
FR - NFPA 701, FR - NFPA 260, FR - CAL TB 117



With treatment:
FR - UK BS5852 Cigar. & Match Test

Woven in a soft linen-like material, SOMBRERO is inspired by the sun and its ripples. Its stylized patterns evoke the warmth of a tropical afternoon bathed in golden light.

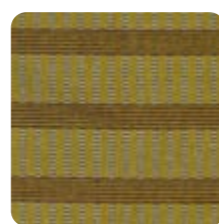


MONTSERRAT

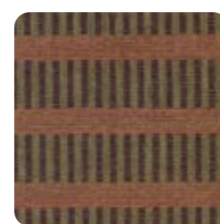
5058



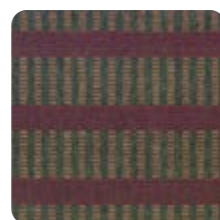
01
Naturel



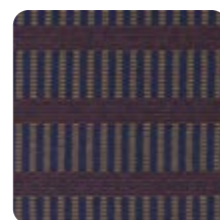
02
Ocre



03
Tomette



04
Kaki



05
Encre

TECHNICAL INFORMATION

Composition Polypropylene 100%

Width 143 cm/56.30"

Repeats V: 12 cm/4.72"
H: 2 cm/0.79"

Weight 880 g/ml

Martindale 40 000

Care

Use

General use upholstery

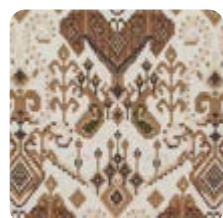
Certification Without treatment:
FR - NFPA 260
FR - CAL TB 117

A companion to ORCHILA, MONTSERRAT features wide bayadère stripes with artisanal refinement. Its raised weave catches the light, recalling colorful fabrics drying in the tropical breeze.

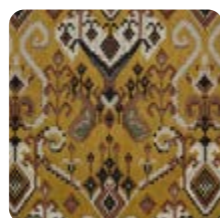


ORCHILA

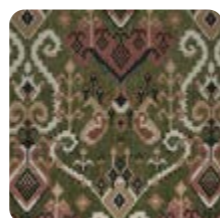
5059



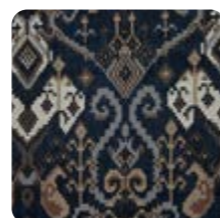
01
Naturel



02
Ocre



03
Kaki



04
Encre

TECHNICAL INFORMATION

Composition Polypropylene 100%

Width 142 cm/55.90"

Repeats V: 69 cm/27.16"
H: 34 cm/13.38"

Weight 1150 g/ml

Martindale 40 000

Care     

Use  

General use upholstery

Certification Without treatment

FR - EN1021 1&2
avec mousse HR/with a HR foam,
FR - NFPA 260, FR - CAL TB 117

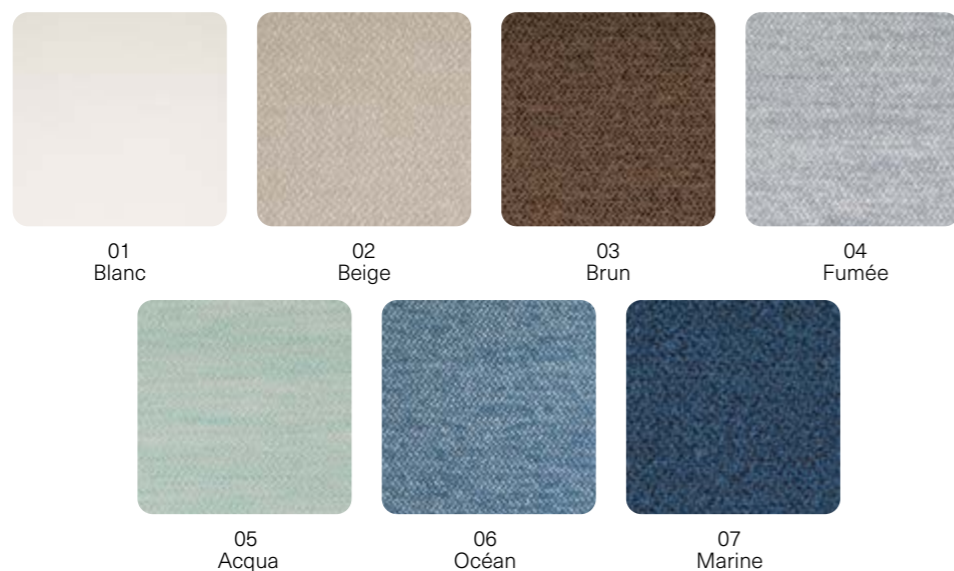


Inspired by a reinterpreted ikat, ORCHILA combines weaving and stylized ornaments in a harmony of mixed threads. Its dense texture and bold graphic design make it a strong and contemporary piece.



FARNIENTE

1482



TECHNICAL INFORMATION

Composition Polypropylene 100%

Laize 135cm/53.15"

Poids 940 g/ml

Martindale 40 000

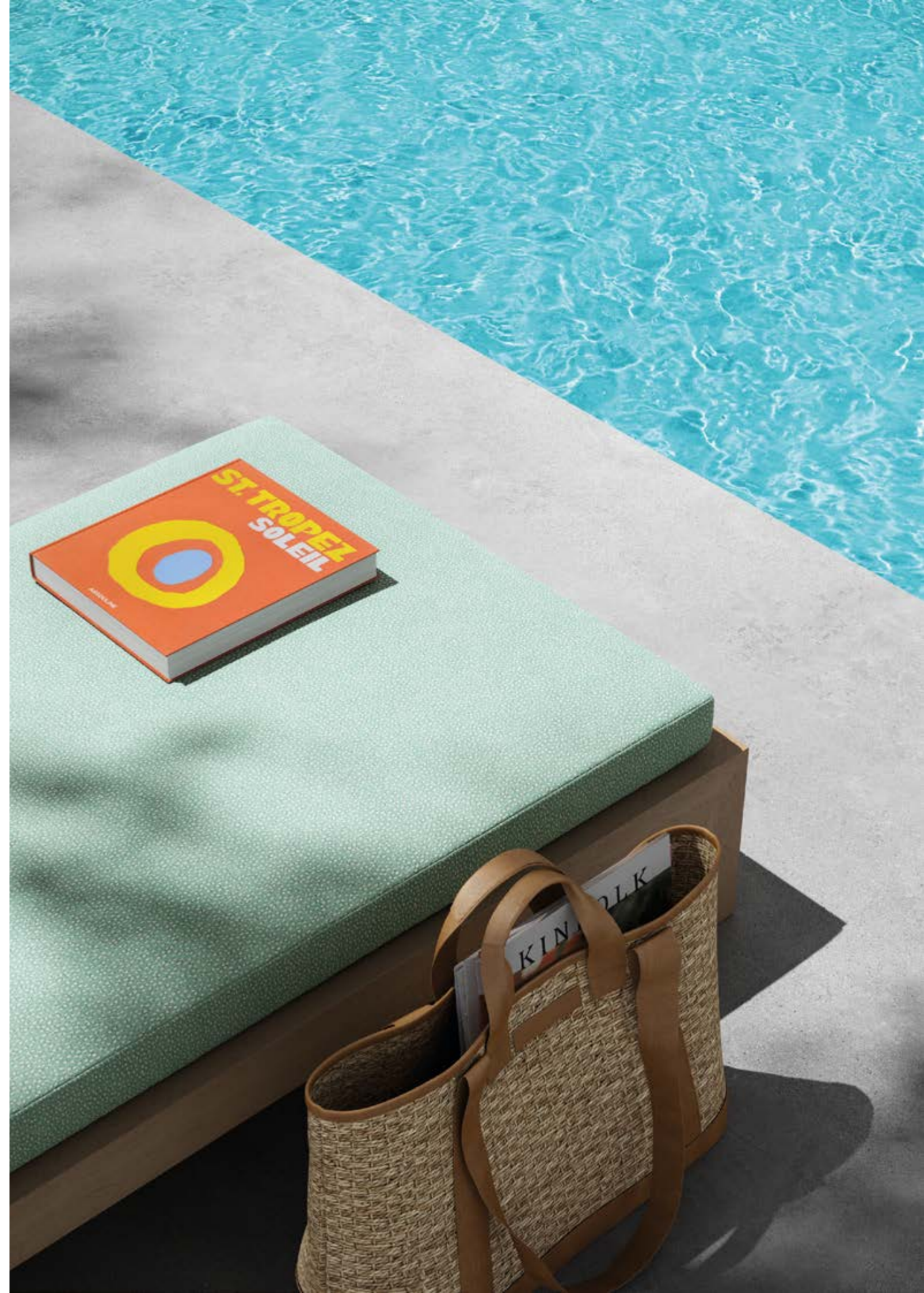
Entretien

Utilisation
Siège intensif/Heavy use upholstery

Certification Oeko-Tex® Standard 100



Designed primarily for sofas, Farniente is a highly textured, wool-like, hand-knit fabric that is both soft and fairly heavy, with waterproof qualities and good resistance to chlorinated water.



ARUBA

5051



TECHNICAL INFORMATION

Composition	Solution dyed acrylic 100%
Width	142 cm/55.90"
Weight	1120 g/ml
Martindale	30 000
Care	
Use	 General use upholstery

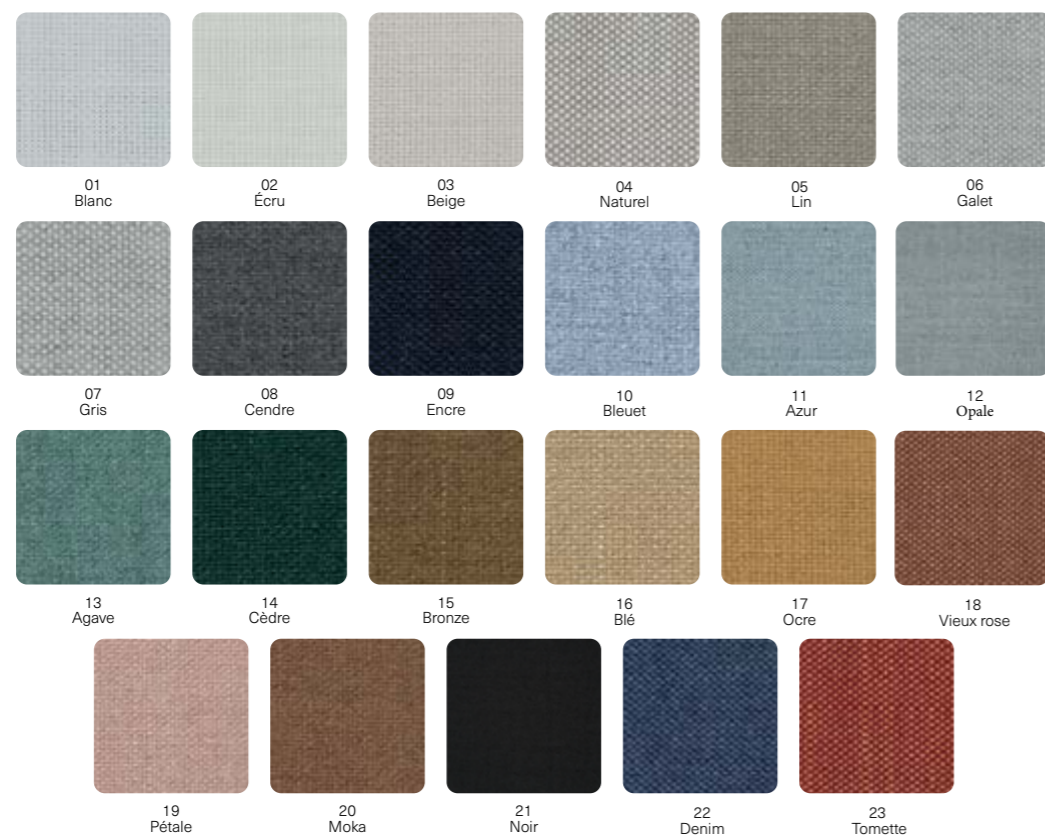
ARUBA is a beautiful matte bouclé with a textured relief, perfect for indoor and outdoor use. It stands out with its soft feel, elegant drape, and especially pleasant touch.

Certification	<p>Without treatment: FR - EN1021 1&2 avec mousse HR/with a HR foam, FR - NFPA 260, FR - CAL TB 117</p> <p>With treatment : FR - UK BS5852 Cigar. Test</p>
----------------------	--



TRINIDAD

5052



TECHNICAL INFORMATION

Composition Solution dyed acrylic 100%


Width 145 cm/58.08"

Weight 770 g/ml

Martindale 30 000

Care 

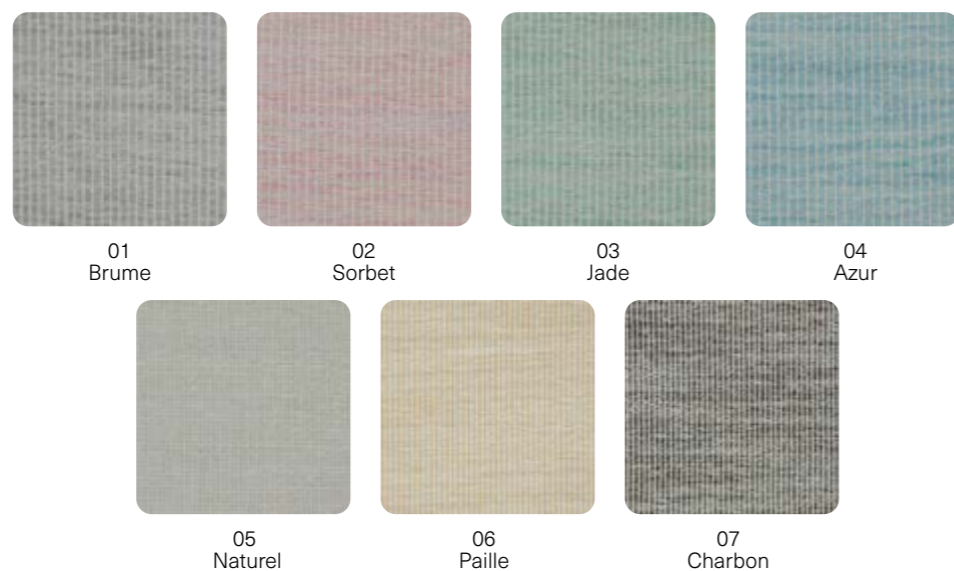
Use 
General use upholstery

Certification 
Without treatment:
FR - NFPA 260, FR - CAL TB 117
With treatment:
FR - UK BS5852 Cigar. Test

TRINIDAD is a fabric that offers a superb linen look, combining exceptional softness and suppleness with an elegant drape. This fabric perfectly replicates the feel and appearance of natural linen while retaining the technical qualities suited for indoor/outdoor use.

SAINTE-LUCIE

5055



TECHNICAL INFORMATION

Composition Polypropylene 100%

Width 143 cm/56.30"

Weight 494 g/ml

Martindale 30 000

Care

Use
General use upholstery

Certification

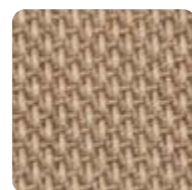
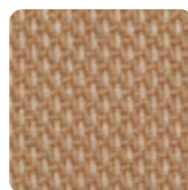
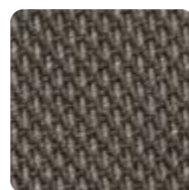
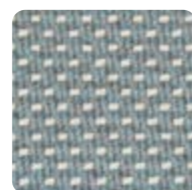
Without treatment:
FR CAL TB 117, FR NFPA 260
With treatment:
FR - UK BS5852 Cigar. Test

A faux-solid with variegated reflections, SAINTE-LUCIE contrasts warp and weft. Its vibrant texture and pastel tones recall light clouds and tranquil island landscapes at day's end.



AMURE

8601

01
Lin02
Camel03
Cendre04
Ciel

This image does not show the entire rug.

TECHNICAL INFORMATION

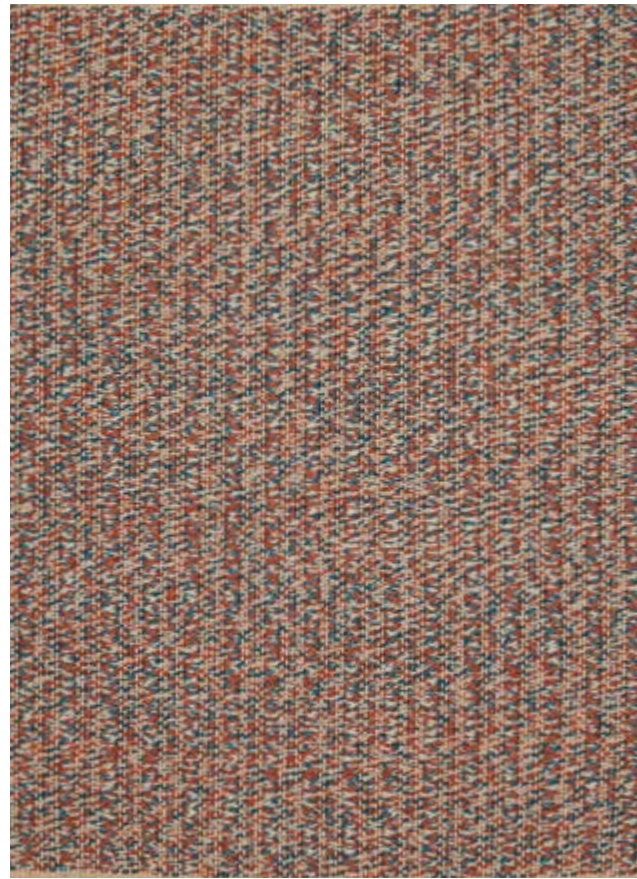
Technique	Tissé main <i>Hand woven</i>
Composition	100% Polypropylène
Density	3 500 g/m ²
Use	Résidentiel - Trafic intense <i>Residential - High traffic</i>
Maximum size	Largeur 5 m./Longueur 30 m. <i>5 mtrs width/5 mtrs lenght</i>

Le tapis AMURE vient compléter notre collection In/Outdoor avec un design simple, pensé pour souligner le geste du tissage. La teinte de ce tapis, subtilement bicolore et ton sur ton, met en valeur un motif répétitif de pois en semis, légèrement en relief grâce à la technique du tissé plat.

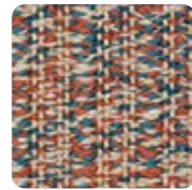


LORO

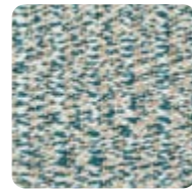
8605



This image does not show the entire rug.



01
Créole



02
Turquoise

TECHNICAL INFORMATION

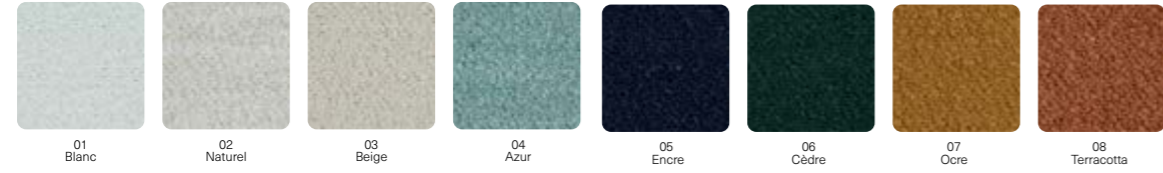
Technique	Tissé main <i>Hand woven</i>
Composition	100% Polypropylène
Density	1 400 g/m ²
Use	Résidentiel - Trafic modéré <i>Residential - Medium traffic</i>
Maximum size	Largeur 5m./Longueur 30m. <i>5 mtrs width/30 mtrs lenght</i>

Le tapis LORO apportera une ambiance estivale et colorée à votre intérieur. Son tissage simple et fin permet une utilisation aisée sur toute sorte de support. Ses couleurs vives, associées au blanc et au naturel, en feront un parfait complément à une décoration ethnique ou contemporaine.

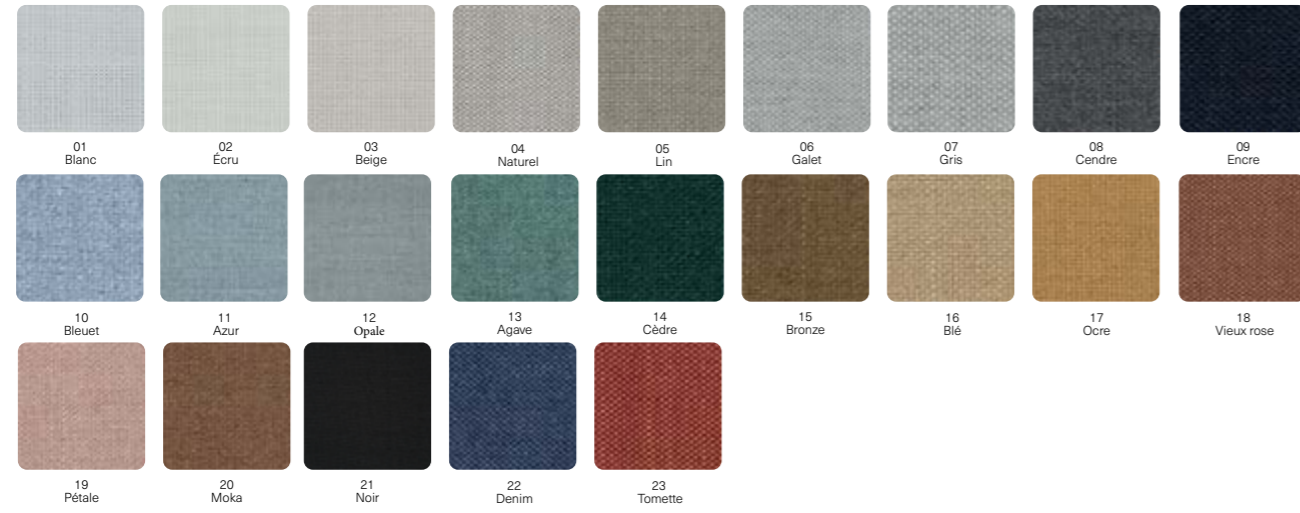


Fabrics

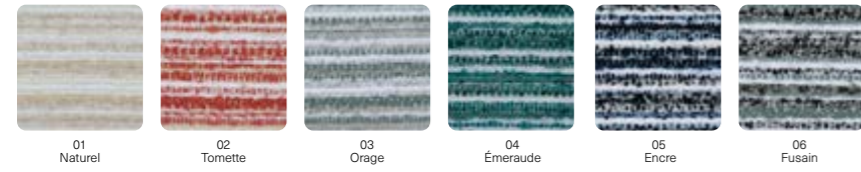
5051 | ARUBA



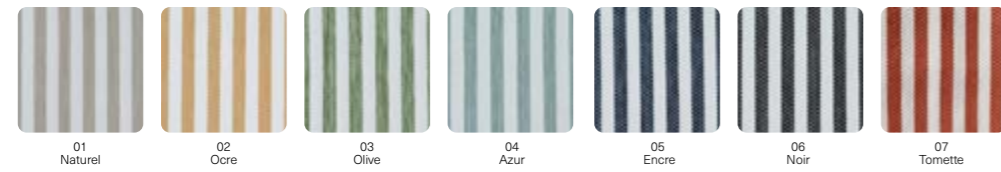
5052 | TRINIDAD



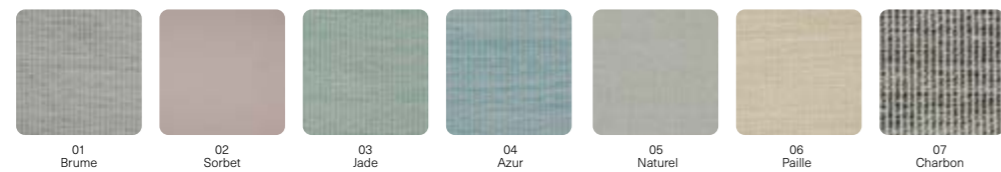
5053 | TOBAGO



5054 | ANTILLA



5055 | SAINTE-LUCIE



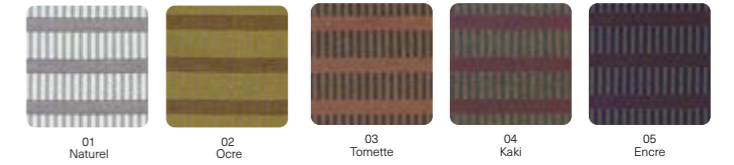
5056 | ANTUIGUA



5057 | SOMBRERO



5058 | MONTERRAT



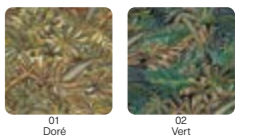
5059 | ORCHILA



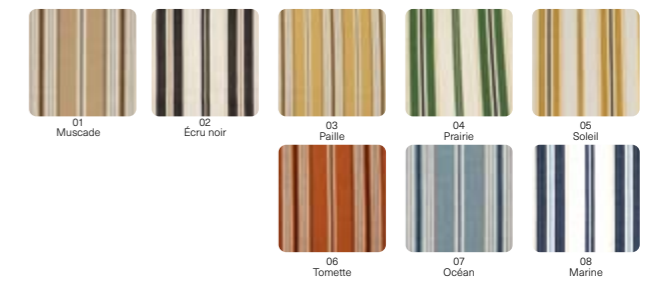
5060 | SABA



5061 | CARAÏBE

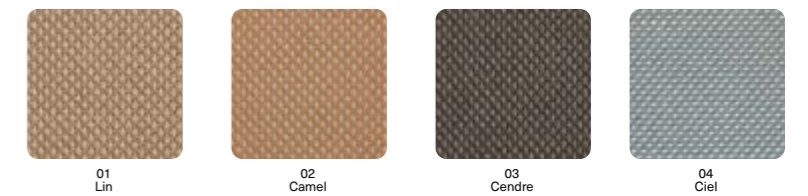


5062 | DOMINICA

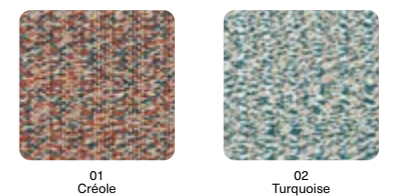


Rugs

8601 | AMURE



8605 | LORO





LELIEVRE

PARIS

Marie de Cheffontaines

+33 (0)1 43 16 88 07

mdechfontaines@lelievreparis.com

14
SEPTEMBRE

Effie Tzouramani

+44 (0)7470 141 725

effietzouramani@14septembre.com

Laurene Breas

+44 (0)7828 588 886

laurenebreas@14septembre.com