



QUENIN
ÉDITEUR
& TISSEUR

1865

LYON
FRANCE

COLLECTION
FESTIVITÉS

Press release - January 2026



1865

After the bucolic elegance of Belle Époque, Quenin unveils Festivités, a collection that pushes further the exploration of rich materials and unexpected supports. Drawing from its precious archives, the Maison breaks free from traditional, pastoral prints to reveal a bold, opulent, and theatrical identity.

Festivités celebrates the joy of entertaining and French hedonism. Between splendor and delicacy, the collection evokes the secret boudoir, the masquerade of sweets, and hushed conversations at the heart of a shimmering Parisian apartment.

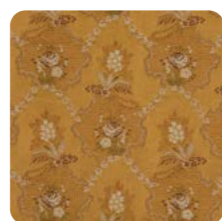
The materials are sumptuous, the patterns burst with life, and the colors blaze. This is a fantasized classic, luxurious and jubilant, where the art of living becomes an art of décor. Fabrics come alive with reflections, textures, and contrasts. It is a collection that stages beauty—a textile feast where every fabric invites the senses to indulge.

Ombelle

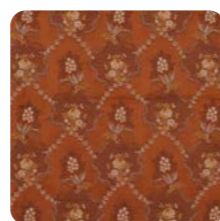
4281



01
Naturel



02
Mordoré



03
Sienne



04
Kaki



05
Grenat

TECHNICAL INFORMATION

Composition PA 47%, CO 35%, LI 18%

Width 140 cm/55.11"

Repeats V: 15 cm/5.90"
H: 14 cm/5.51"

Weight 430 g/ml

Martindale 40 000

Care

Use
Heavy use upholstery

Certification Without treatment:
FR - NFPA 260, FR - CAL TB 117
With treatment:
FR - UK BS5852 Cigar. & Match Test
FR - UK BS5852 Crib 5

OMBELLE, a refined lampas on satin background, reveals a pattern of floral latticework. Its embroidered effect embodies the sophisticated charm of a precious decor, between heritage and modernity.



Récital

4282



01
Écru



02
Doré



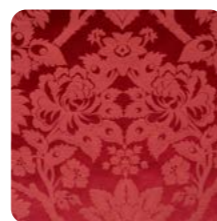
03
Kaki



04
Nattier



05
Vieux Rose



06
Rubis

TECHNICAL INFORMATION

Composition PES FR 51%, PES TREVIRA CS 49%

Width 140 cm/55.11"

Repeats V: 35 cm/13.77"
H: 35 cm/13.77"

Weight 370 g/ml

Martindale 40 000

Care

Use
Heavy use upholstery

Certification *Without treatment*
FR - France M1, FR - EN1021 1&2 with a CMHR foam, FR - Italy Class 1
FR - UK BS5852 Crib 5, FR - UK BS5867,
FR - NFPA 701, FR - NFPA 260, FR - CAL TB 117
IMO Parts 7&8

Classic and majestic, RÉCITAL reinvents damask in a nonfire version with a sumptuous drape. Its shine and flexibility make it an essential for upholstery, curtains and draperies.



Exquise

4283



01
Beige



02
Doré



03
Amande



04
Pétale



05
Capucine



06
Nattier

TECHNICAL INFORMATION

Composition CV 43%, CO 34%, PES FR 12%, PA 11%

Width 142 cm/55.90"

Repeats V: 6 cm/2.36"
H: 18 cm/7.08"

Weight 470 g/ml

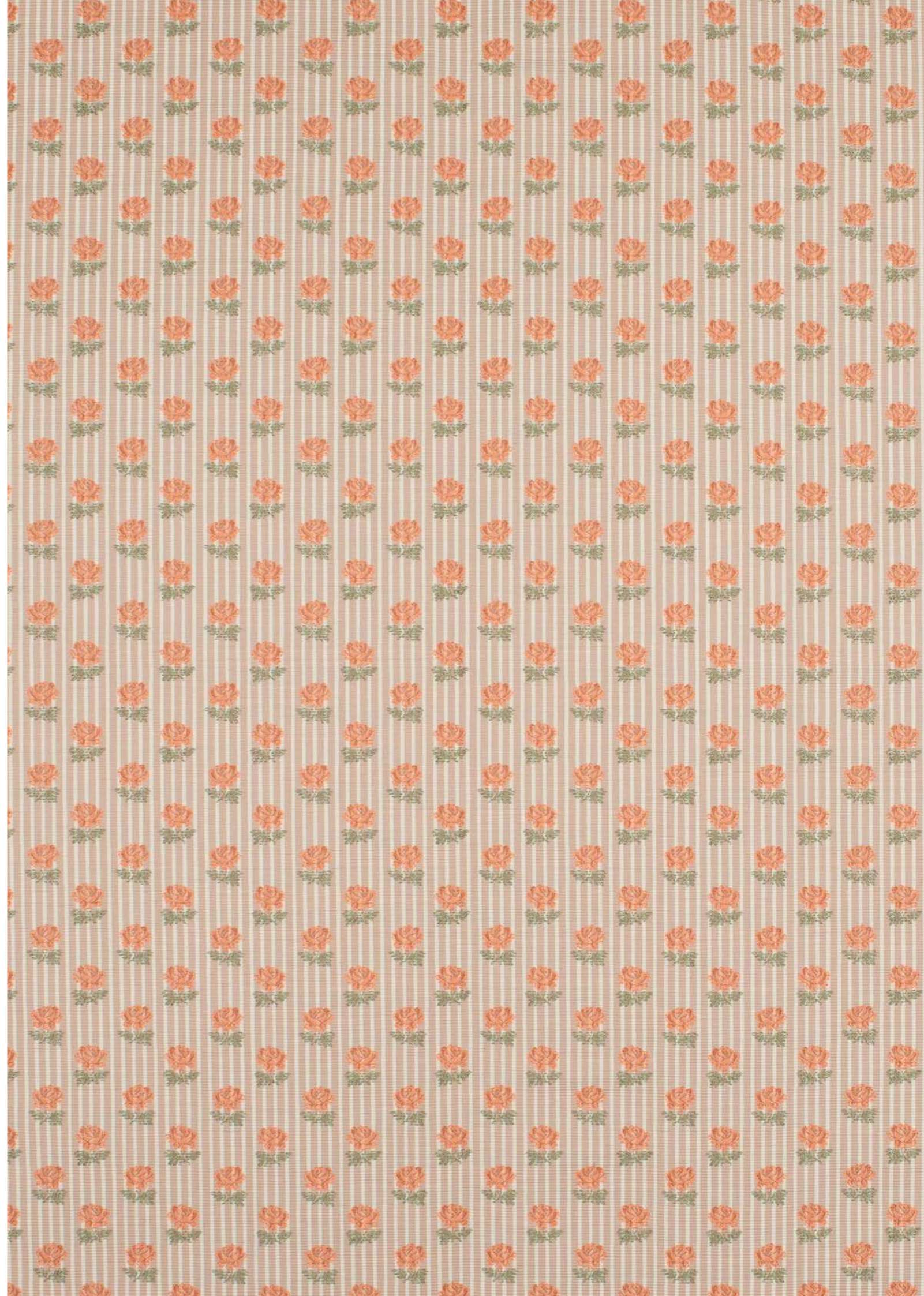
Martindale 40 000

Care

Use
Heavy use upholstery

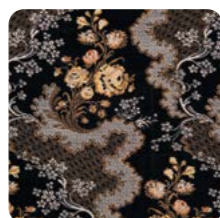
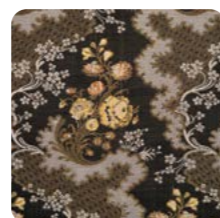
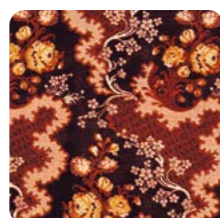
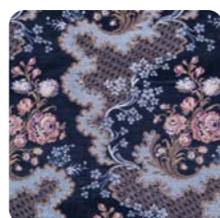
Certification Without treatment:
FR - UK BS5852 Cigar. Test, FR - NFPA 701,
FR - NFPA 260, FR - CAL TB 117, IMO Parts 7&8
With treatment:
FR - UK BS5852 Crib 5

Balanced and elegant, EXQUISE combines the rigor of Ottoman stripes with the softness of scattered florals. The small flowers, arranged rhythmically on colored bands, infuse a playful touch into this joyful fabric, woven in the Lelièvre manufactory.



Mélodie

4285

01
Noir02
Bronze03
Kaki04
Grenat05
Nuit

TECHNICAL INFORMATION

Composition CV 75%, CO 25%

Width 138 cm/54.33"

Repeats V: 61 cm/24.01"
H: 34 cm/13.38"

Weight 860 g/ml

Martindale 50 000

Care

Use

Heavy use upholstery

Certification Without treatment :
FR - EN1021 1&2 with a HR foam
FR - NFPA 260, FR - CAL TB 117

MÉLODIE, a spectacular jacquard velvet, reinvents a floral archive in a sculpted and multicolored effect. The flowers unfold in relief in a sensual and baroque composition.



Clair de Lune

4286

01
Blanc

TECHNICAL INFORMATION

Composition Base: LI 100%, embroidery: PES 100%

Width 132 cm/51.96"

Repeats V: 79 cm/31.10"
H: 66 cm/25.98"

Weight 345 g/ml

Care 

Use 

CLAIR DE LUNE, an embroidered voile, traces delicate floral arabesques in the light. A breath of air and poetry, to soften interiors with an immaterial elegance.



Coquette

4287

01
Paille02
Fleur d'Oranger03
Azur

TECHNICAL INFORMATION

Composition CO 68%, PES 32%

Width 141 cm/55.51"

Repeats V: 53 cm/20.86"
H: 71 cm/27.95"

Weight 630 g/ml

Martindale 25 000

Care

Use

Light use upholstery

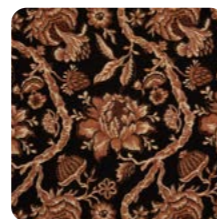
Certification *Without treatment:*
FR - NFPA 260, FR - CAL TB 117
With treatment:
FR - UK BS5852 Cigar. Test

A light tapestry, COQUETTE revisits a period print in a pastel, faded palette. Its powdery tones and supple touch give it a vintage charm, playfully reinvented.



Poème

4288

01
Doré02
Kaki03
Noir

TECHNICAL INFORMATION

Composition CO 87%, PA 7%, PAN 4%, CV 1%, PES 1%

Width 134 cm/52.75"

Repeats V: 37 cm/14.57"
H: 22 cm/8.66"

Weight 931 g/ml

Martindale 30 000

Care 

Use 

General use upholstery

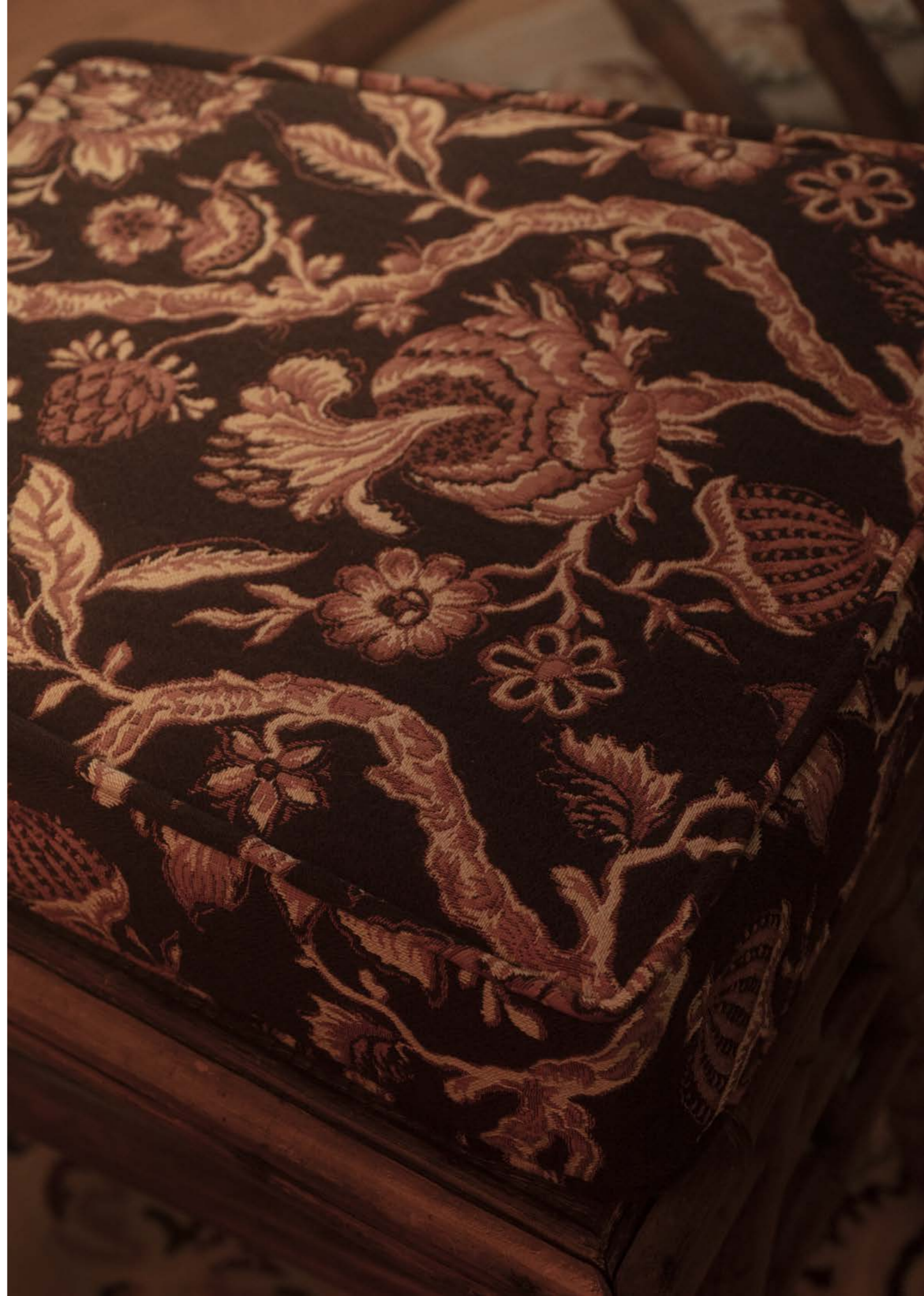
Certification *Without treatment*

FR - EN1021 1&2 with a CMHR foam
FR - UK BS5852 Cigar. Test
FR - NFPA 701, FR - NFPA 260, FR - CAL TB 117

With treatment:

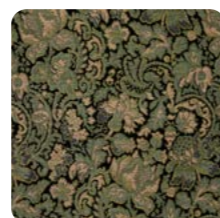
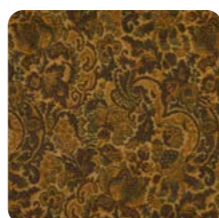
FR - UK BS5852 Crib 5

Originating from a floral indienne archive, POÈME transposes its design onto a jacquard boutis with a smoky, contrasting effect. Its subtle shades and texture evoke the softness of an antique textile reinterpreted with whimsy.



Orchestra

4289

01
Cornaline02
Bois de Rose03
Jade04
Onyx05
Bronze06
Ambre

TECHNICAL INFORMATION

Composition CV 48%, CO 28%, PES 24%

Width 131 cm/51.57"

Repeats V: 57 cm/22.44"
H: 33 cm/12.99"

Weight 830 g/ml

Martindale 40 000

Care 

Use 

General use upholstery

Certification Without treatment:

FR - EN1021 1&2 with a CMHR foam
FR - UK BS5852 Cigar. Test
FR - NFPA 701, FR - NFPA 260, FR - CAL TB 117
With treatment : FR - UK BS5852 Crib 5

Soft chenille tapestry, ORCHESTRA reinterprets an archival floral pattern in an explosion of shades and textures. Its arabesques evoke a masquerade ball of colours.



Ritournelle

4291



01
Soleil



02
Amande



03
Pétale

TECHNICAL INFORMATION

Composition LI 100%

Width 139 cm/54.72"

Repeats V: 41 cm/16.14"
H: 34 cm/13.38"

Weight 505 g/ml

Martindale 20 000

Care

Use

Light use upholstery

Certification *Without treatment*
FR - EN1021 1&2 with a CMHR foam
FR - NFPA 260, FR - CAL TB 117

RITOURNELLE sings of a fantasized countryside. Its floral print scattered on wide linen stripes evokes the summer fabrics of the past, reinterpreted in a joyful and contemporary spirit.



Comtesse

4290



01
Onyx



02
Jonquille



03
Amande



04
Nattier



05
Pétale



06
Violine



07
Mordoré

TECHNICAL INFORMATION

Composition SE 100%

Width 138 cm/54.33"

Repeats H: 1 cm/0.39"

Weight 130 g/ml

Care

Use

Certification *Without treatment*
FR - EN1021 1&2 with a CMHR foam
FR - NFPA 260, FR - CAL TB 117

Two-tone silk taffeta with fine stripes, COMTESSE combines brilliance and subtlety. Its pastel or deep contrasts evoke the light of an evening ball, balancing classic elegance with contemporary boldness.



Santal

4292



01
Naturel



02
Ambre



03
Céladon

TECHNICAL INFORMATION

Composition CO 63%, CV 30%, PES 5%, NY 2%

Width 136 cm/53.54"

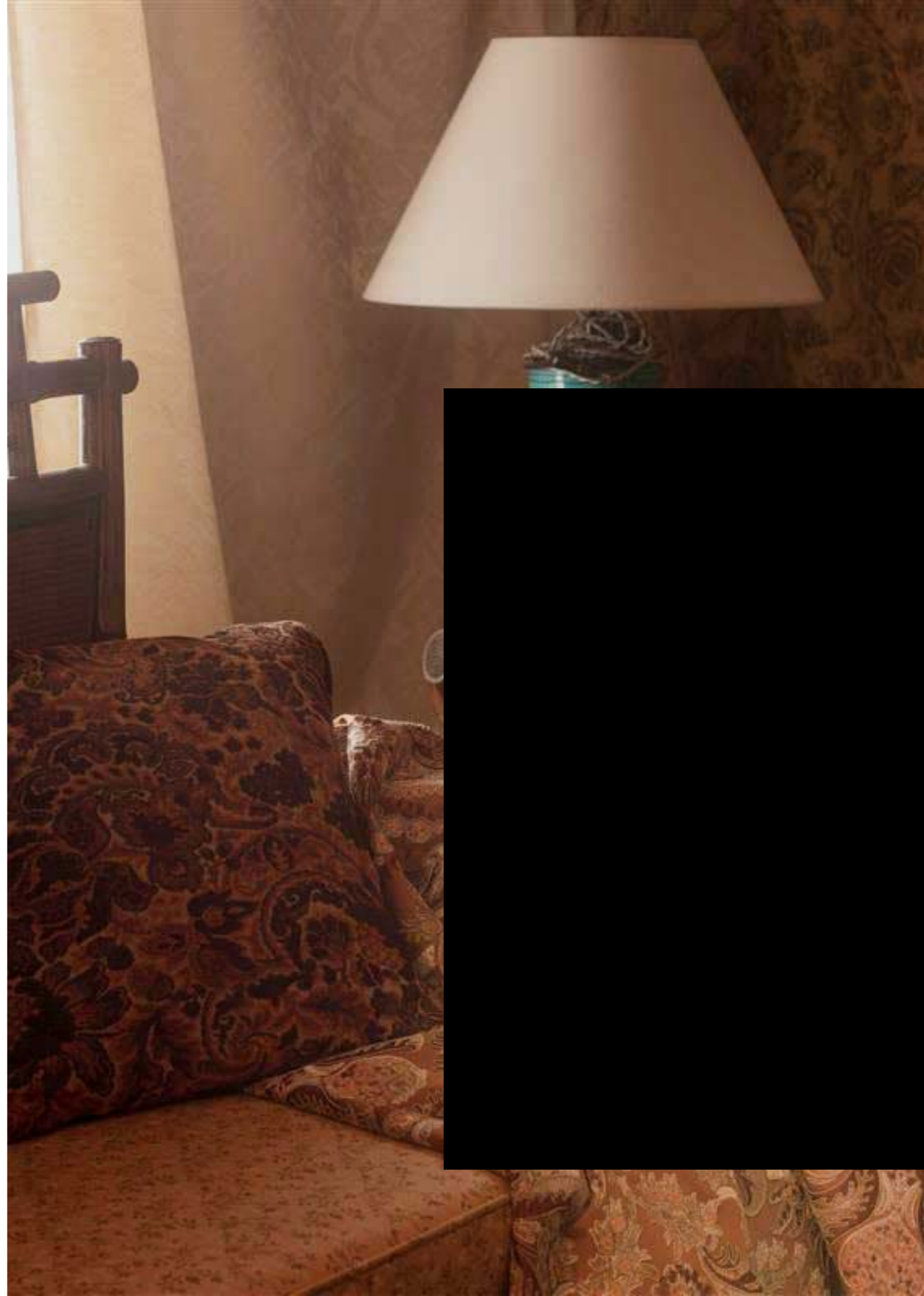
Repeats V: 59 cm/23.22"
H: 33 cm/12.99"

Weight 673 g/ml

Care

Use

A finely detailed ornamental embroidery, SANTAL traces its arabesques with a satin thread in relief on a cotton satin background. This masterpiece celebrates the virtuosity of craftsmanship and the opulence of detail.



Louange

8606



TECHNICAL INFORMATION

Technique	Hand knotted
Texture	Cut pile
Composition	67% Laine NZ, 33% Soie
Density	120 knots/SQ. IN - 5000 g/m ²
Pile height	5 mm
Use	Residential - Medium
Maximum size	12 mtrs width/16mtrs lenght

Inspired by the patterns of French Savonnerie, this rug was envisioned as an ode to the tradition of the classic French motif. However, the elements that make up the design are reimagined with a modern twist, and the deep colour palette of the navy version places this rug firmly in our contemporary era.





ABOUT GALERIE VAUCLAIR

The Galerie Vauclair has been internationally recognized for over thirty years for its rigorous selection of winter-garden furniture, celebrated at the Universal Exhibitions of the 19th century. Rattan and bamboo coexist harmoniously with remarkable ceramics by the greatest artists of that era.

It should also be noted that Galerie Vauclair has a particular fondness for the Napoléon III spirit, expressed through scenographies inspired by the intimate "cocotte" salons, where seating from this period revels in an abundance of silks, damask fabrics, and richly colored velvets.

Laurence and Denis Vauclair-Rouquette are not only tireless treasure hunters, but also art historians and, above all, recognized experts in their field. Passionate antique dealers, consulted by museums and surrounded by skilled artisans, they work to ensure transmission of knowledge. For each piece, they determine its origin, materials, and the technical innovations of the 19th century.

For Paris Déco Off 2026, the partner couple was invited by Maison Lelièvre to take part in a major exhibition at La Pagode. The Galerie Vauclair's pieces—bamboo, rattan, ceramics, and lighting—were entrusted to interior designer Edgar Payet, who reimagined the atmosphere of this iconic residence.

Indeed, La Pagode has always been a rare and mythical place, steeped in history. As early as 1925, the antique dealer Monsieur Ching Tsai Loo established his vision and expertise there, devoting himself to Chinese art within this singular house near Parc Monceau.



LELIEVRE
PARIS

Marie de Cheffontaines

+33 (0)1 43 16 88 07

mdechfontaines@lelievreparis.com

14
SEPTEMBRE

Effie Tzouramani

+44 (0)7470 141 725

effietzouramani@14septembre.com

Laurene Breas

+44 (0)7828 588 886

laurenebreas@14septembre.com