

The background of the image is a dark, richly decorated interior. The wall is covered in a dense, repeating pattern of a landscape with palm trees and sailboats. The pattern is in shades of brown and gold. In the foreground, a dark wooden table holds a golden incense burner with a lid and three legs. The burner is intricately decorated with a central figure and floral motifs. The lighting is dramatic, highlighting the textures and colors of the scene.

LELIEVRE

PARIS

Collection
ESCALES LOINTAINES

Press release - January 2026



ESCALES LOINTAINES

The Escales Lointaines collection invites us to travel through materials. Each textile becomes a scenic view, capturing the emotion of distant horizons. Lelièvre Paris celebrates the art of weaving, noble fibers, and refined craftsmanship, creating a dreamlike journey through exotic aesthetics and sensory experiences.

Subtle basketry-inspired weaves, maritime knot geometries, botanical and Asian references and occasional metallic yarns evoke sun-drenched archipelagos. Each fabric captures the spirit of an encounter, a landscape, a memory that shapes contemporary interiors.

LA TRAVERSÉE

5068



01
Doré



02
Cuivre



03
Céladon

TECHNICAL INFORMATION

Composition PA 43%, CO 34%, PES 19%, LI 4%

Width 139 cm/54.73"

Raccords V: 44 cm/17.32"
H: 35 cm/13.77"

Weight 500 g/ml

Martindale 50 000

Care

Use
Heavy use upholstery

Certification Without treatment:
FR - EN1021 1&2 avec mousse HR/with a HR foam
FR - NFPA 260, FR - CAL TB 117
Avec traitement / With treatment:
FR - UK BS5852 Cigar. & Match Test
FR - UK BS5852 Crib 5

Derived from a heritage artwork in the archives, LA TRAVERSÉE features a stylized landscape of lush hills and islets. Woven on jacquard looms in the Lelièvre mill, it offers a rich hand and a multidimensional woven pattern that sets the narrative tone of the collection.



AZALÉE

5066



01
Doré



02
Cuivre



03
Céladon

TECHNICAL INFORMATION

Composition	CO 52%, PA 48%
Width	138 cm/54.33"
Raccords	V: 14 cm/5.51" H: 14 cm/5.51"
Weight	430 g/ml
Martindale	50 000

Care 

Use 

Heavy use upholstery

Certification *Without treatment:*
FR - NFPA 260, FR - CAL TB 117
Avec traitement / With treatment:
FR - UK BS5852 Cigar. & Match Test
FR - UK BS5852 Crib 5

AZALÉE, a small stylized floral motif coordinated with the fabric LA TRAVERSÉE - 5068. Subtle and delicate, it evokes a secret garden, a connection between elements and seasons, a breath in the journey.



AMARRÉ

5067



01
Argile



02
Naturel



03
Miel



04
Bronze

TECHNICAL INFORMATION

Composition PA 50%, LI 25%, CO 25%

Width 143 cm/56.29"

Raccords V: 5 cm/1.96"
H: 2 cm/0.78"

Weight 370 g/ml

Martindale 40 000

Care

Use
Heavy use upholstery

Certification Without treatment:
FR - NFPA 260, FR - CAL TB 117
Avec traitement / With treatment:
FR - UK BS5852 Cigar. & Match Test
FR - UK BS5852 Crib 5

AMARRÉ, inspired by marine knots, plays with texture and weave. The linen creates a natural relief, reminiscent of ropes and nets from a distant harbour.



NECTAR

5074



01
Écru



02
Sable



03
Écaille



04
Bronze

TECHNICAL INFORMATION

Composition CO 75%, PES 20%, PA 5%

Width 138 cm/54.33"

Weight 1 090 g/ml

Martindale 100 000

Care

Use

Siège intensif/Heavy use upholstery

Certification Sans traitement / *Without treatment:*

FR - EN1021 1&2
avec mousse CMHR/with a CMHR foam
FR - UK BS5852 Cigar. Test, FR - NFPA 701
FR - NFPA 260, FR - CAL TB 117

Avec traitement / With treatment:
FR - UK BS5852 Crib 5

Thick, generous, and wonderfully soft, NECTAR charms with its plush appearance and warmth. Its texture evokes the richness of an artisanal fabric, perfect for comfort and tranquility.



CIMES

5073



01
Naturel

02
Doré

03
Céladon

TECHNICAL INFORMATION

Composition CO 29%, CV 22%, PC 14%,
PES 14%, LI 11%, WV 10%

Width 139 cm/54.72"

Raccords V: 25 cm/9.84"
H: 69 cm/27.16"

Weight 890 g/ml

Martindale 50 000

Care

Use

Heavy use upholstery

Certification *Without treatment:*
FR - EN1021 1&2 avec mousse HR/with a HR foam
FR - NFPA 260
FR - CAL TB 117

Echoing the tree branches in the fabric LA TRAVERSÉE - 5068, CIMES unfolds a beaded and luminous texture. Its soft reflections and all-over pattern evoke the canopy of a tropical forest at sunrise.



MANIOC

5072



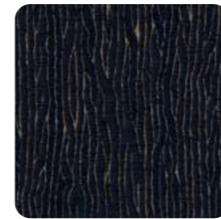
01
Naturel



02
Camel



03
Cuivre



04
Nuit

TECHNICAL INFORMATION

Composition CO 36%, PES 22%, CV 21%,
WV 12%, PA 9%

Laize / Width 137 cm/53.93"

Raccords / Repeats V: 24 cm/9.44"
H: 35 cm/13.78"

Poids / Weight 890 g/ml

Martindale

Entretien / Care 

Utilisation / Use 

Siège régulier/General use upholstery

Certification Sans traitement / *Without treatment:*
FR - EN1021 1&2 avec mousse CMHR/with a CMHR foam
FR - NFPA 260, FR - CAL TB 117
Avec traitement / With treatment:
FR - UK BS5852 Cigar. & Match Test

Between bark and natural fiber, MANIOC offers a play of subtle reliefs and reflections. Its chenille texture, dotted with shimmering threads, evokes the surface of a trunk sculpted by time and light.



VANNERIE

5064



01
Poivre

02
Doré

03
Paprika



04
Absinthe



05
Agave

TECHNICAL INFORMATION

Composition CV 39%, LI 33%, CO 25%, NY 3%

Width 139 cm/54.72"

Raccords V: 3 cm/1.18"

Weight 872 g/ml

Martindale 50 000

Care 

Use 

Heavy use upholstery

Certification *Without treatment:*

FR - UK BS5852 Cigar. Test
FR - EN1021 1&2 avec mousse HR/with a HR foam
FR - NFPA 701, FR - NFPA 260, FR - CAL TB 117

Avec traitement / With treatment:

FR - UK BS5852 Crib 5

VANNERIE, a woven jacquard embodying artisanal beauty. The soft linen thread and its colour variations evoke baskets and travel objects.



SOLSTICE

5069



01
Blanc



02
Naturel



03
Rafia

TECHNICAL INFORMATION

Composition LI 99%, PES 1%

Width 312 cm/122.83"

Raccords V: 39 cm/15.35"

Weight 348 g/ml

Care 

Use 

A double-width voile of great lightness, SOLSTICE stands out with its irregular stripes and subtle sheerness. It brings rhythm and serenity to the space.



PÉPITE

5063



01
Noir

02
Naturel

03
Miel

04
Camel

05
Chocolat

06
Blush

07
Burgundy

08
Bronze

09
Céladon

TECHNICAL INFORMATION

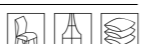
Composition CV 59%, PES 36%, LI 5%

Width 140 cm/55.11"

Weight 950 g/ml

Martindale 50 000

Care 

Use 

Heavy use upholstery

Certification *Without treatment:*

FR - EN1021 1&2 avec mousse HR/with a HR foam

FR - NFPA 701, FR - NFPA 260, FR - CAL TB 117

Avec traitement / With treatment:

FR - UK BS5852 Cigar. Test

Under its subtle reflections, PÉPITE reveals a refined tweed-effect weave. Its light shimmer and softness give it a precious allure, like flashes of light at the turn of a journey.



ZÉNITH

5065



01
Écru



02
Beige



03
Écorce

TECHNICAL INFORMATION

Composition CO 45%, JU 55%

Width 138 cm/54.33"

Raccords V: 1 cm/0.39"
H: 19 cm/7.48"

Weight 380 g/ml

Care

Use

Certification Without treatment:
FR - NFPA 701

ZÉNITH, a semi-opaque voile with artisanal charm. The jute thread creates vertical stripes that gently filter the light, symbolizing the strength of the sun at its zenith.



LA CANOPÉE

5076



01
Écru



02
Camel



03
Noir

TECHNICAL INFORMATION

Composition Base: LI 100%; Broderie: PES 100%

Width 136 cm/53.54"

Raccords V: 80 cm/31.49"
H: 67 cm/26.37"

Weight 686 g/ml

Care

Use

LA CANOPÉE transposes an archive into a contemporary language. Embroidered on natural linen, it celebrates the lushness of tropical flora. A spectacular embroidery, designed as a living painting.



CEYLAN

5071



01
Écru

TECHNICAL INFORMATION

Composition	LI 50%, CO 26%, PES 13%, WV 7%, PC 4%
Width	336 cm/132.28"
Repeats	V: 11 cm/4.33" H: 56 cm/22.04"
Weight	840 g/ml
Care	
Use	

Like a sailboat's sail in the wind, CEYLAN reveals a tone-on-tone wool-effect pattern, balancing transparency and lightness. This voile with a stylized motif captures the movement of the breeze and the light of a seafaring horizon.



LOTUS

5077



01
Épices



02
Réglisse

TECHNICAL INFORMATION

Composition LI 35%, CV 35%, 26% CO, PES 4%

Width 139 cm/54.72"

Raccords V: 72 cm/28.34"
H: 70 cm/27.55"

Weight 635 g/ml

Martindale

Care 

Use 

Siège régulier/General use upholstery

On a textured linen-blend background, LOTUS reveals a lush floral print where passionflowers, orchids, and lotuses intertwine. Its aged effect evokes poetic travel memories.



CANNAGE

5078



01
Beige



02
Doré



03
Terracotta



04
Poivre



05
Agave

TECHNICAL INFORMATION

Composition CO 60%, PES 20%, PE 16%, AF 4%

Width 144 cm/56.69"

Repeats V: 1 cm/0.39"
H: 1 cm/0.39"

Weight 860 g/ml

Martindale 100 000

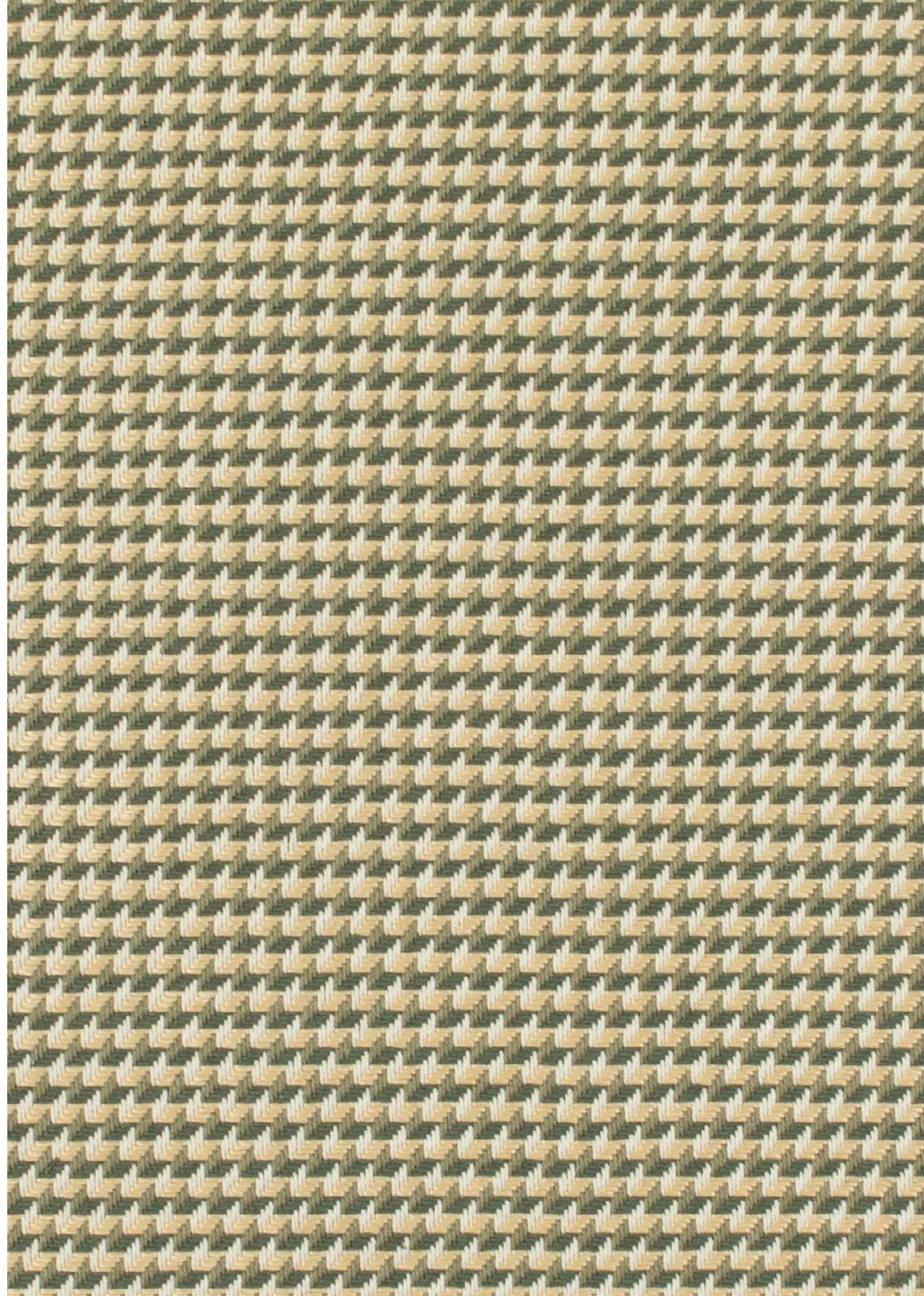
Care

Use

Siège intensif/Heavy use upholstery

Certification Sans traitement / *Without treatment:*
FR - NFPA 260, FR - CAL TB 117
Avec traitement / *With treatment:*
FR - UK BS5852 Cigar. Test

Woven like a raffia ribbon, CANNAGE plays with contrasts and reflections. Its geometric pattern evokes the precision of weaving, between tradition and modernity.



IDÉAL

5070



TECHNICAL INFORMATION

Composition CO 100%

Width 142 cm/55.90"

Weight 705 g/ml

Martindale 50 000

Care 

Use 

Heavy use upholstery

Certification *Without treatment:*

FR - EN1021 1&2 avec mousse CMHR/with a CMHR foam, FR - UK BS5852 Cigar. Test FR - NFPA 701, FR - NFPA 260, FR - CAL TB 117

Avec traitement / With treatment:

FR - UK BS5852 Crib 5

IDÉAL, a solid granite texture with a soft touch. Its wide colour palette blends with all atmospheres, enhancing strong materials with balance and simplicity.

HÉLIOS

5075



TECHNICAL INFORMATION

Composition CO 51%, LI 49%

Width 140 cm/55.11"

Weight 840 g/ml

Martindale 50 000

Care

Use

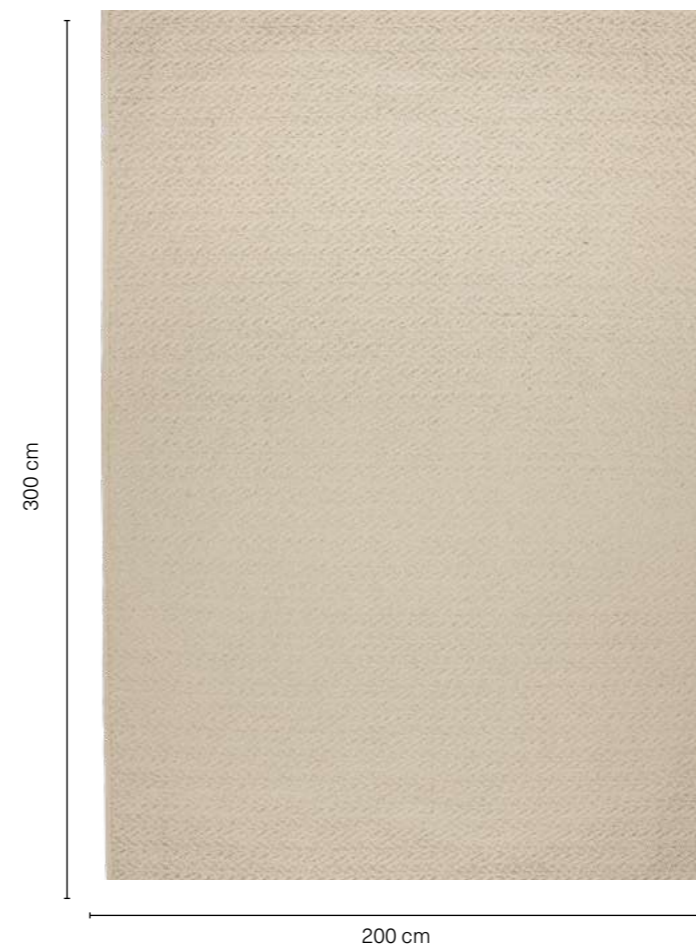
Siège régulier/General use upholstery

Certification *Without treatment:*
FR - EN1021 1&2 avec mousse HR/with a HR foam
FR - UK BS5852 Cigar. Test
FR - NFPA 260

The linen velvet HÉLIOS embodies the timeless elegance of Lelièvre. Its rich colour palette and noble texture make it a contemporary essential, designed to enhance all creations.

ZARZO

8602



01
Écru

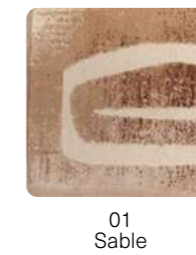
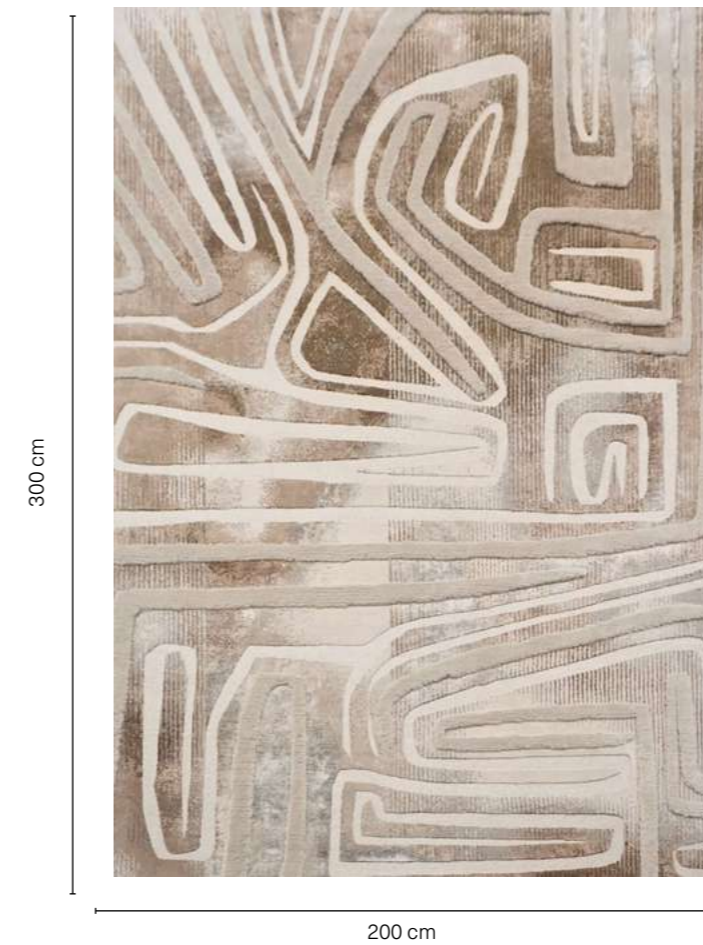
INFORMATION TECHNIQUES

Technique	<i>Hand woven</i>
Composition	<i>100% NZ wool</i>
Density	<i>4 200 g/m²</i>
Use	<i>Residential - Medium traffic</i>
Maximum size	<i>5 mtrs width/30 mtrs lenght</i>

This rug, made from natural undyed wool, highlights a complex weave. The 'rice grain' pattern created refers to the caning technique, widely used in Asia. A rich craftsmanship that will bring a sophisticated and natural touch to your interior. This rug stands out for the complexity of its flat weaving technique and its natural tone. The combination of these two features makes it both a unique and original product.

OURIKA

8604



TECHNICAL INFORMATION

Technique	Hand woven
Texture	Cut and loop pile
Composition	100% NZ wool
Density	5 000 g/m ²
Pile height	16 mm
Use	Residential - Medium traffic
Maximum size	6,10 mtrs width

A solid, textured rug, designed as a landscape element to create an immersive experience in your interior. Depending on its colour, it invites you to travel through a dry, arid, aquatic, or grassy world. Soft to the touch, rhythmic in its pattern, and bold in its solid colour, this rug creates a strong sensory impact in the room where it is placed, bringing a touch of nature to the decor. This rug captivates with its embossed design, its fine texture reminiscent of the sophistication of hand-knotted weaving, and the softness of its wool, making it a unique product.

TECHNICAL INFORMATION

Technique	Hand knotted
Texture	Cut pile
Composition	50% Silk, 18% NZ Wool, 17% Merino, 8% Super Alpaga, 7% Mohair
Density	3 400g/m ²
Pile height	6, 10, 16 mm
Use	Residential
Maximum size	6,10 mtrs width

Like a furrow crossing the desert, winding through valleys and arid plains, the pattern of this hand-knotted rug unfolds with poetry. This rug impresses with the exceptional richness of its materials, giving it a highly complex appearance where shine and matte interact, where softness and texture are revealed with subtlety.



À PROPOS DE GALERIE VAUCLAIR

The Galerie Vauclair has been internationally recognized for over thirty years for its rigorous selection of winter-garden furniture, celebrated at the Universal Exhibitions of the 19th century. Rattan and bamboo coexist harmoniously with remarkable ceramics by the greatest artists of that era.

It should also be noted that Galerie Vauclair has a particular fondness for the Napoléon III spirit, expressed through scenographies inspired by the intimate "cocotte" salons, where seating from this period revels in an abundance of silks, damask fabrics, and richly colored velvets.

Laurence and Denis Vauclair-Rouquette are not only tireless treasure hunters, but also art historians and, above all, recognized experts in their field. Passionate antique dealers, consulted by museums and surrounded by skilled artisans, they work to ensure transmission of knowledge. For each piece, they determine its origin, materials, and the technical innovations of the 19th century.

For Paris Déco Off 2026, the partner couple was invited by Maison Lelièvre to take part in a major exhibition at La Pagode. The Galerie Vauclair's pieces—bamboo, rattan, ceramics, and lighting—were entrusted to interior designer Edgar Payet, who reimagined the atmosphere of this iconic residence.

Indeed, La Pagode has always been a rare and mythical place, steeped in history. As early as 1925, the antique dealer Monsieur Ching Tsai Loo established his vision and expertise there, devoting himself to Chinese art within this singular house near Parc Monceau.



LELIEVRE
PARIS

Marie de Cheffontaines

+33 (0)1 43 16 88 07
mdechfontaines@lelievreparis.com

Crédit photo :
©PierreDoucet

14
SEPTEMBRE

Effie Tzouramani

+44 (0)7470 141 725
effietzouramani@14septembre.com

Laurene Breas

+44 (0)7828 588 886
laurenebreas@14septembre.com