



Collection “Empreintes”

Press release 2026

LELIEVRE

PARIS

×

LELEU

PARIS



Collection “Empreintes”

With Empreintes, Lelièvre Paris and Maison Leleu present a new collection of fabrics and rugs born from a close dialogue between heritage and contemporary creation. Five years after Rétrospective, this collaboration reaffirms a shared ambition: to evolve heritage through material, design, and interpretation.

Founder and Artistic Director of Maison Leleu since 2018, Alexia Leleu has selected emblematic patterns from the Maison’s archives, chosen for their decorative strength and modernity, to begin a joint venture with the Lelièvre Paris design studio. She offers a demanding reinterpretation of the Leleu archives, working on scale, weaves, threads, and textures to reveal a new reading of the original designs.

From this synergy emerges a collection where transmitting does not mean repeating, but transforming.

Some patterns are preserved in their original proportions, while others are deconstructed or reinvented through Alexia Leleu’s bold approach, with their strength sometimes amplified by the interplay of materials. Jacquards, embroideries, chenilles, and velvets express a shared search for sensuality and depth, staying true to the decorative spirit of Maison Leleu and the textile expertise of Lelièvre Paris.

Empreintes thus asserts a living heritage: a collection proud of its roots, carried by the expertise of the Lelièvre studio and the creative vision of Alexia Leleu, where design and material converse to write a new shared chapter



Sylve | 3271

A richly decorative embroidery, Sylve revisits a vegetal motif drawn from the Maison Leleu archives. Nature is reinterpreted through a distinctly Art Deco geometry, as if the plant world had been disciplined without ever losing its poetry. The design, deeply reworked, oscillates between floral and graphic expression, between organic freedom and structure. The colour palette—combining natural and golden nuances, bronze and sienna—gives the fabric a muted and timeless elegance.

Type

Embroidery

Composition

LI 58%, CV 35%, PES 6%

Width

136 cm

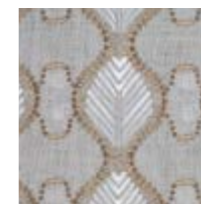
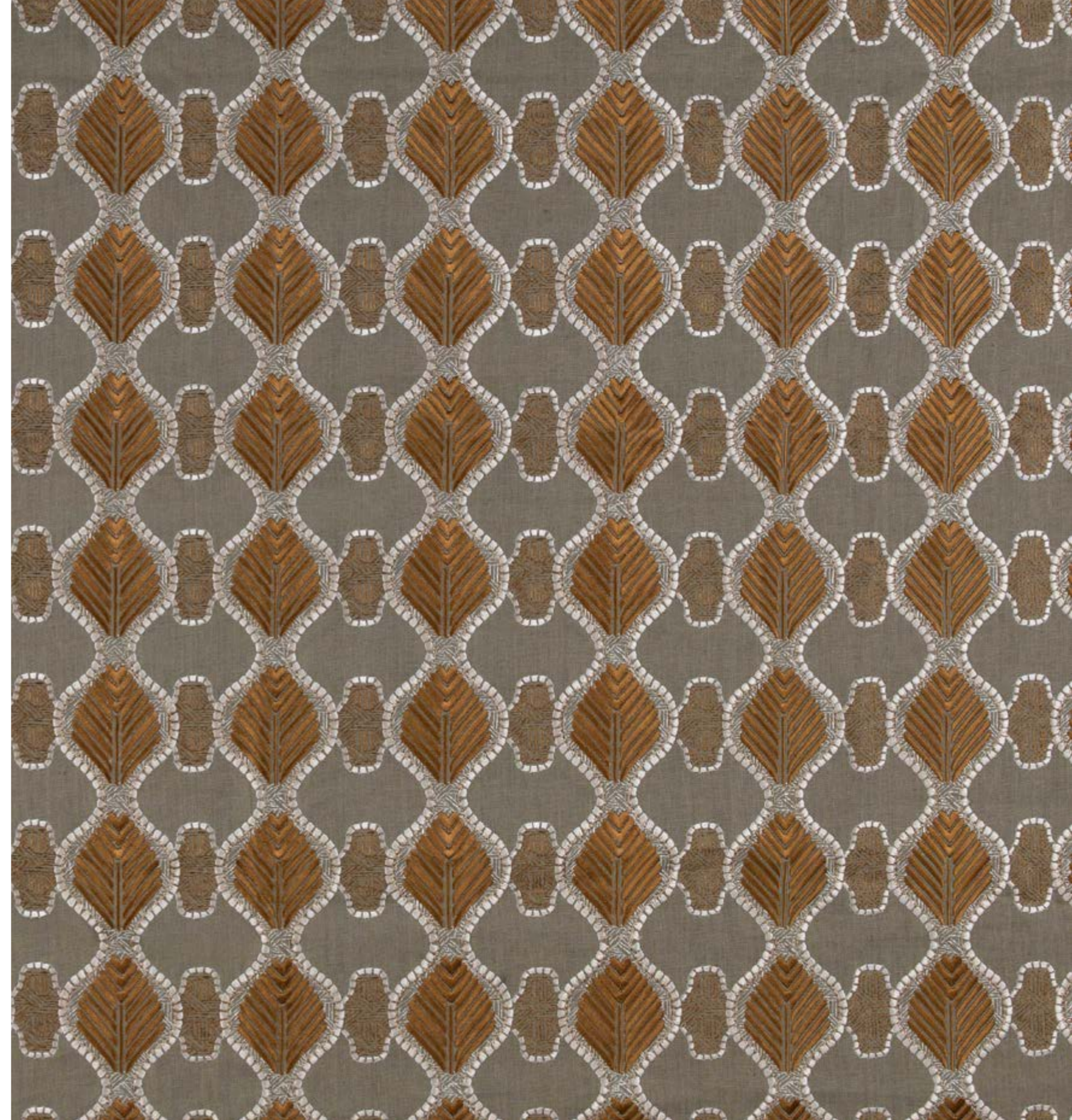
Repeat

V : 59 cm / H : 12 cm

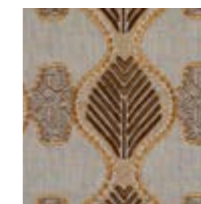
Care



Usage



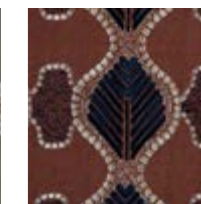
01 - Naturel



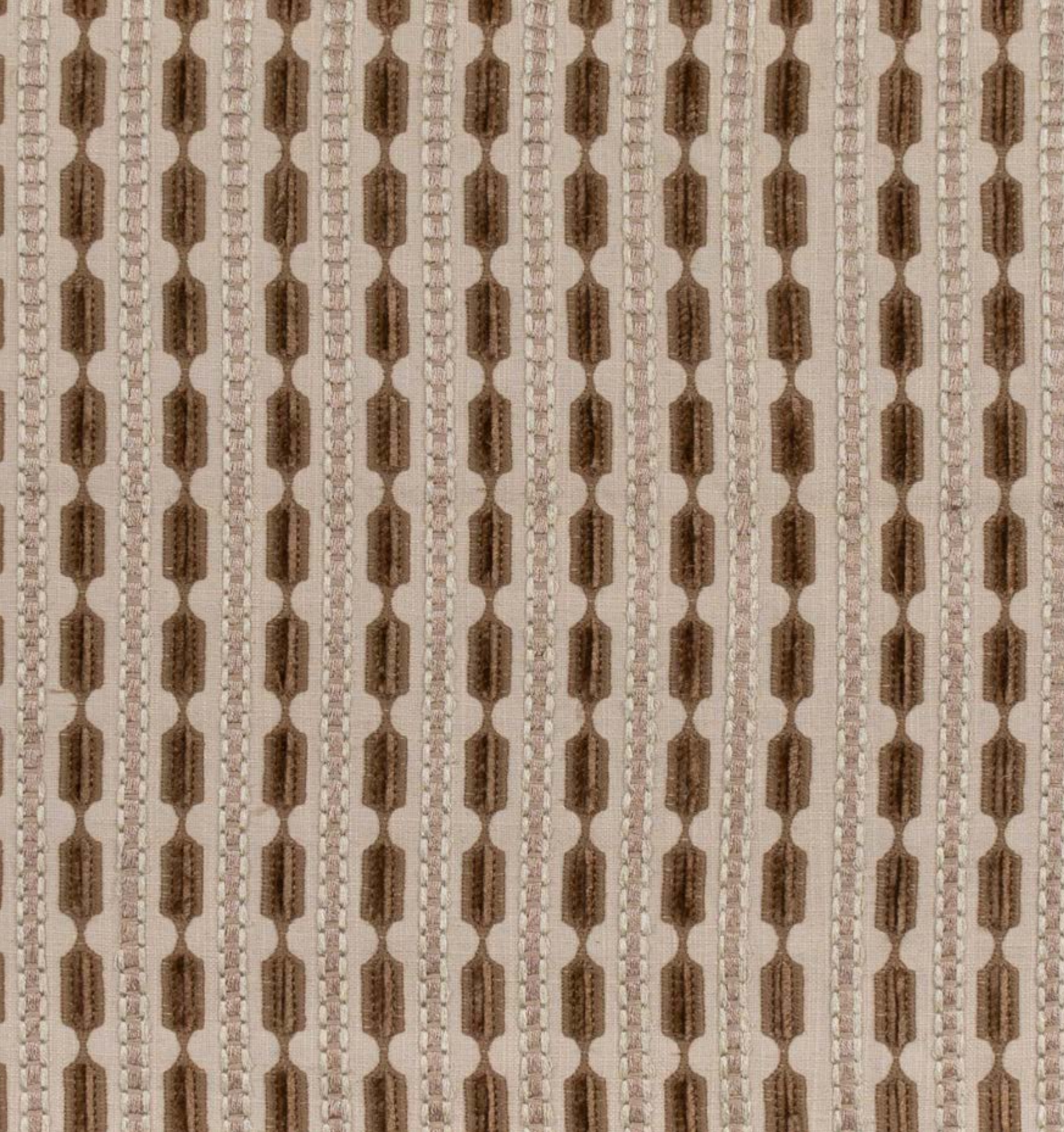
02 - Mordoré



03 - Bronze



04 - Sienna



Néo | 3272

Néo is born from the meeting of two distinct motifs: a reimagined stripe and a geometry inspired by a rug. Designed by Alexia Leleu, their fusion gives rise to an original pattern, where the lines intertwine to create a new signature. The blended linen, combined with embroidery and cut-thread work, produces a soft, feathery relief that is extremely pleasant to the touch. The colors, in harmony with those of Sylve, reinforce the unity and coherence of the collection.

Type

Embroidery

Composition

CV 49%, PES 27%, CO 16%, LI 8%

Width

132 cm

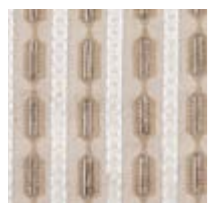
Repeat

V : 4 cm / H : 4 cm

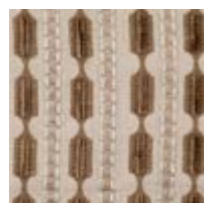
Care



Usage



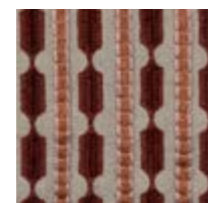
01 - Naturel



02 - Mordoré



03 - Bronze



04 - Acajou

Eldora | 3273

Drawn from a Maison Leleu archive, Eldora embodies a faithful and sensitive approach to decorative heritage. Designed for drapery, the floral motif has been deliberately enlarged to gain amplitude and movement. The jacquard weave creates a subtle relief reminiscent of the carved wood paneling so dear to the Leleu universe. Available in luminous nacre and deep golden tones, the fabric captures the light and reveals the full nobility of the material.

Type

Jacquard

Composition

CV 61%, PES 27%, LI 12%

Width

140 cm

Repeat

V : 69 cm / H : 71 cm

Care

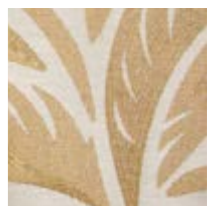
☒ ☒ ☒ ☒ ☒ ☒

Usage

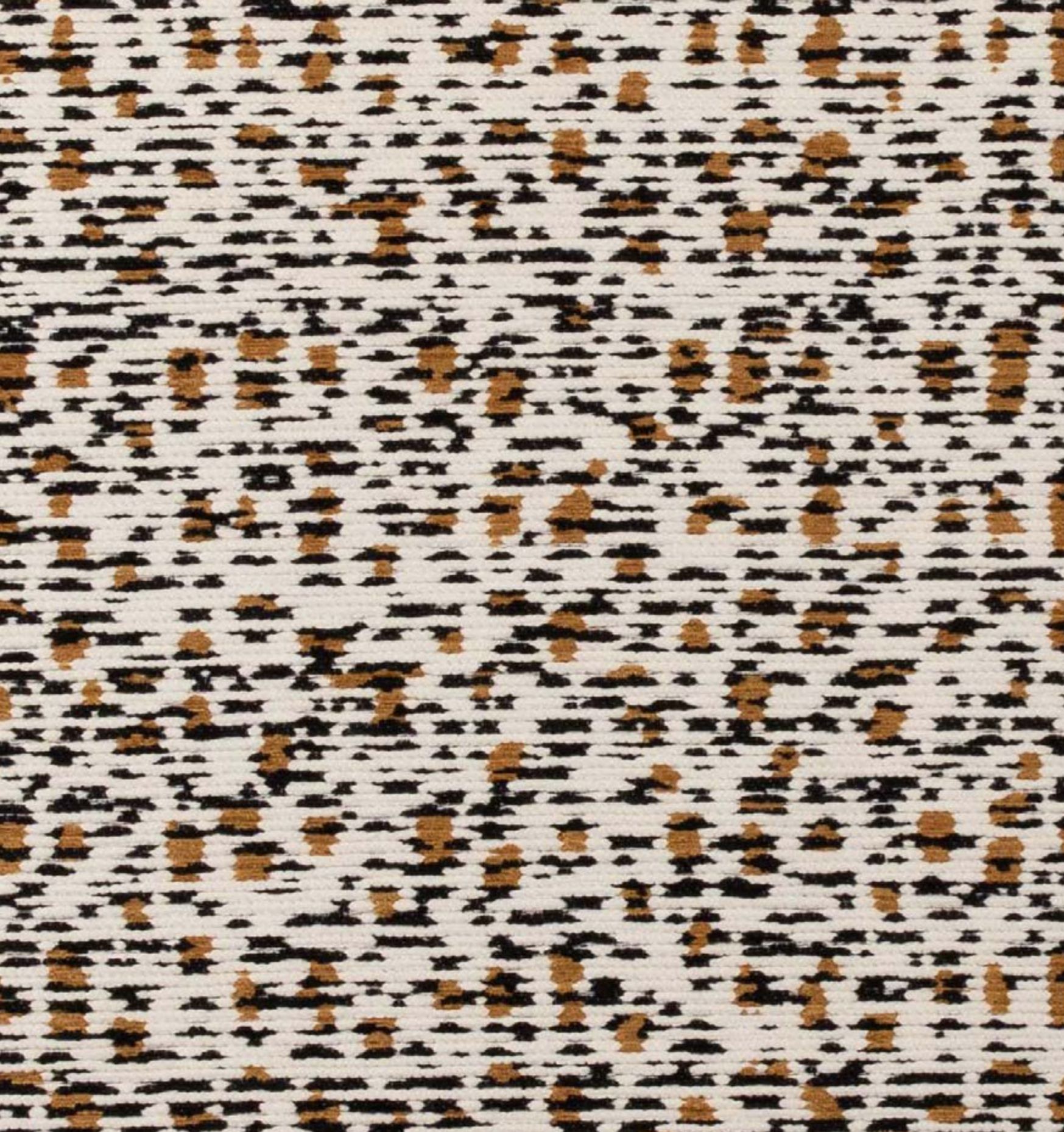
☒ ☒



01 - Nacre



02 - Mordoré



Élan | 3274

Designed by Maison Leleu, ÉLAN is a solid-look fabric with a strong presence, distinguished by a discreet yet structuring pattern animated by a horizontal vibration. The bicolored stripe, without strict repetition, is enhanced by a blend of threads that densifies the material. The fabric emphasizes subtlety over decoration, offering a contemporary and elegant interpretation. Suitable for both upholstery and curtains, ÉLAN embodies a carefully balanced combination of restraint and character.

Type

Jacquard chenille yarn

Martindale

20 000

Composition

CO 61%, CV 28%, PA 9%, PC 2%

Care

☒ ☒ ☒ ☒ ☒ ☒

Width

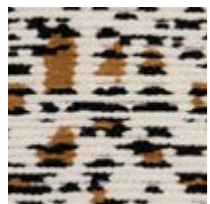
139 cm

Usage

☒ ☒

Repeat

V : 40 cm / H : 35 cm



01 - Boisé



02 - Camel



03 - Kaki

Instant | 3275

Inspired by an archival wallpaper from Maison Leleu combining trees and a grid pattern, Instant offers a pared-down and modern interpretation. The design is progressively simplified until it becomes a minimalist form reminiscent of bark. This small-scale jacquard in a cotton blend, enriched with chenille in the weft, provides a supple and textured material. Available in a wide range of colors,

Instant acts as a sophisticated faux-plain, revealing the full richness of the yarn and the weave.

Type

Embroidery

Martindale

40 000

Composition

CV 55%, CO 22%, LI 16%, PES 7%

Care



Usage



Width

140 cm

Repeat

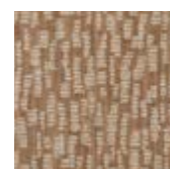
V : 11 cm / H : 23 cm



01 - Écru



02 - Naturel



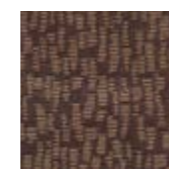
03 - Camel



04 - Écaille



05 - Doré



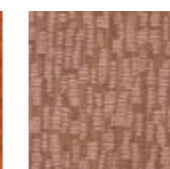
06 - Moka



07 - Ambre



08 - Tangerine



09 - Bois de rose



10 - Grenat



11 - Boisé



12 - Nuit



13 - Ciel



14 - Bronze



15 - Jade



Bestia | 3276

Bestia takes inspiration from a detail extracted from an old fish motif, whose dots become the starting point for a new decorative language. This fragment is combined with a more graphic Art Deco expression, evoking a resonance with the animal world. The cut velvet, set against a jacquard ground, plays with contrasts of texture and depth. Metallic threads punctuate the design, recalling the patinas of Leleu furniture and bringing a subtle radiance to the composition.

Type

Embroidery

Composition

CV 78%, CO 22%

Width

140 cm

Repeat

V : 31 cm / H : 30 cm

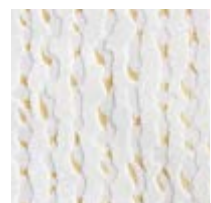
Martindale

100 000

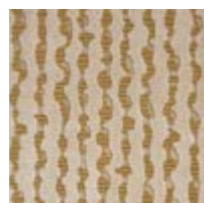
Care



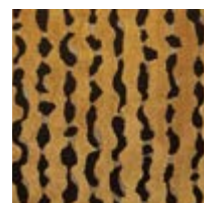
Usage



01 - Craie



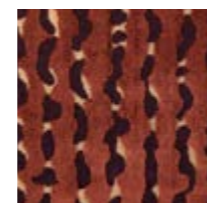
02 - Naturel



03 - Mordoré



04 - Kaki



05 - Auburn



05 - Bleu acier

Tanoa | 3277

In keeping with the spirit of the other pieces in the collection, Tanoa is inspired by an archival motif that has been only minimally transformed its modernity is expressed primarily through material. The floral design is developed in depth through an interplay of weaves and reliefs that give the textile an almost architectural presence. Shimmering yarns enliven the surface and catch the light with delicacy. Developed for both drapery and upholstery, Tanoa offers an elegant drape and a subtle dialogue between hand, yarn and motif.

Type

Embroidery

Composition

PES FR 100%

Width

141 cm

Repeat

V : 72.5 / H : 35.3

Martindale

40 000

Care

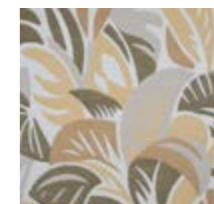
☒ ☒ ☒ ☒ ☒ ☒

Usage

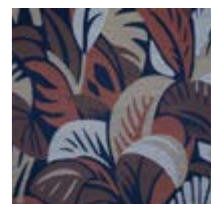
☒ ☒ ☒



01 - Naturel



02 - Mordoré



03 - Boisé



***Empreintes*, two rugs echoing the textile collection**

As part of her collaboration with Lelièvre Paris, Alexia Leleu designed two exclusive rugs conceived as a direct echo of the fabric collection she created.

These unique pieces extend the graphic universe of the textiles by giving it a new dimension: the floor. Motifs initially conceived for fabric shift in scale and territory. What unfolds within the weave becomes a landscape when expressed in a rug.

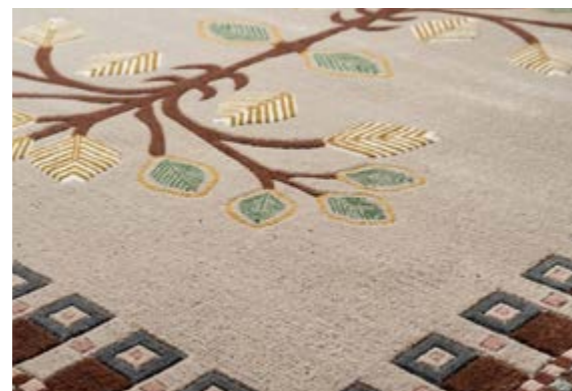
To compose these two pieces, Alexia Leleu immersed herself in the house archives and in the way Paule Leleu designed her rugs. Borders, graphic fields and rhythmic compositions structured space with an almost architectural precision.

Today, Alexia Leleu revisits this compositional logic while integrating the contemporary motifs of the Empreintes textile collection.

The designs move freely from one material to another: from textile to rug, from motif to landscape.

These two rugs occupy a singular place within the project: they do not form a rug collection, but rather two creations specifically imagined to accompany the fabrics developed for this collaboration with Lelièvre Paris.

In this way, the design becomes an imprint that moves freely between surfaces—from fabric to floor—revealing a vision of decoration in which each element responds to the other with accuracy and elegance.



01 Automne

Orygyn | 8607-01

Composition

100% NZ wool

Technique

Hand-tufted, cut pile

Size

340 x 410 cm

Use

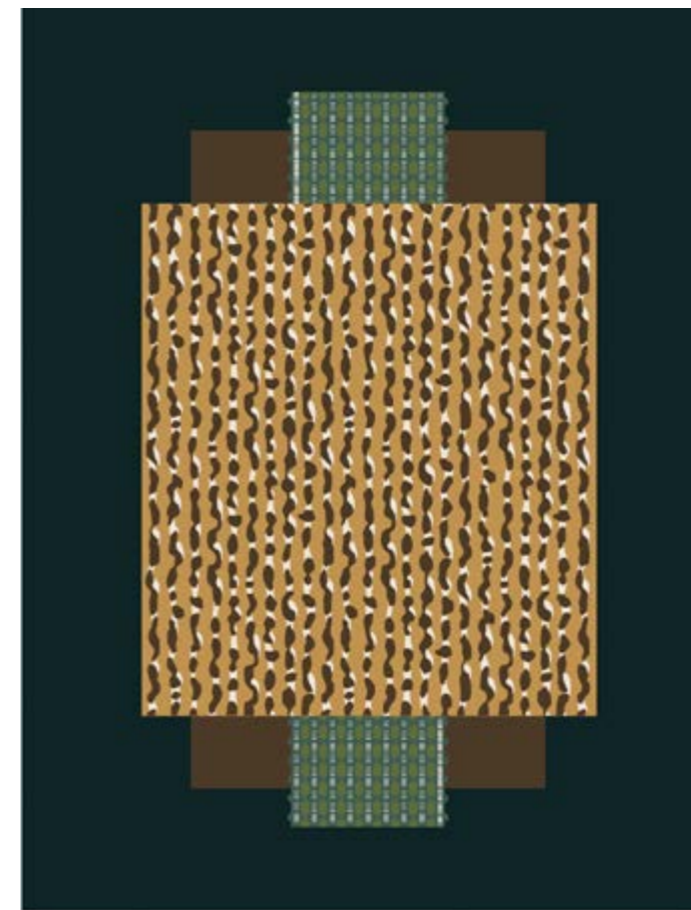
High traffic

Pile height

8 - 10 mm

Density

3 500gr/m²



01 Bleu d'eau

Naya | 8608-01

Composition

100% NZ wool

Technique

Hand-tufted, cut pile

Size

330 x 430 cm

Use

Hight traffic

Pile heighy

8 - 10 mm

Density

3 500gr/m²

About **Maison Lelièvre**

Maison Lelièvre is the 95th French luxury Maison of the Comité Colbert since July, 1st 2024, and was one of the first companies to be labelled Entreprise du Patrimoine Vivant (EPV - Living Heritage Company) in 2006. Maison Lelièvre embodies French style, and its collections of fabrics, wall coverings, and bespoke rugs are an intrinsic part of the world of luxury decor. Since 1914, four generations of Lelièvre have passed on their passion for precious fabrics. Having incorporated other houses tracing back to the 17th century, such as Tassinari & Chatel founded in 1680, and Quenin founded in 1865, Maison Lelièvre today possesses unique

know-how, inherited from Camille Pernon and the brothers Grand. Its products adorn France and Europe's greatest castles and exceptional venues. Its archives are carefully preserved and have notably enabled the success of the "Imperial Silks for Versailles" exhibition hosted at the Grand Trianon. Today, Maison Lelièvre is part of the Art de vivre division of C4 Industries, alongside distinguished EPV-certified houses including Faïencerie de Gien and Duvivier Canapés.

Alexia Leleu embodies a new generation of interior designers. Founder and Artistic Director of the "new generation" Maison Leleu since 2018, she develops a demanding and sensitive approach in which contemporary creation engages in dialogue with an exceptional heritage inherited from her great-grandfather, the renowned interior designer and decorator Jules Leleu, a key figure of the Art Deco period.

She develops collections in which every piece and every design is conceived as a tribute to the craftsmanship of her predecessors. Through her lines of furniture, rugs, lighting and textiles—created with leading artisans—she offers a poetic interpretation of the stylistic signatures of the House, enriched by a distinctly contemporary personal style.

Recognized both in France and internationally, she collaborates with leading interior designers including Martyn Bullard, Fabrizio Casiraghi, Commune, David Collins, Stéphanie Coutas, Robert Couturier, Jean-Louis Deniot, Joseph Dirand, Festen, Laura Gonzalez, Humbert & Poyet, Alyssa Kapito, Peter Marino, Barbara Mendoza, Juan Pablo Molyneux, Anne-Sophie Pailleret, Pinto, Pierre-Yves Rochon, Jessica Schuster, Isabelle Stanislas, among others.

Alexia Leleu also leads complete interior design projects.



About **Alexia Leleu**



LELIEVRE
PARIS

Marie de Cheffontaines
+33 (0)1 43 16 88 07
mdechfontaines@lelievreparis.com

14
SEPTEMBRE

Effie Tzouramani
+44(0)7470 141 725
effietzouramani@14septembre.com

Maison Leleu
+33 (0)6 42 86 10 68
charlotterivier@14septembre.com